

## Question

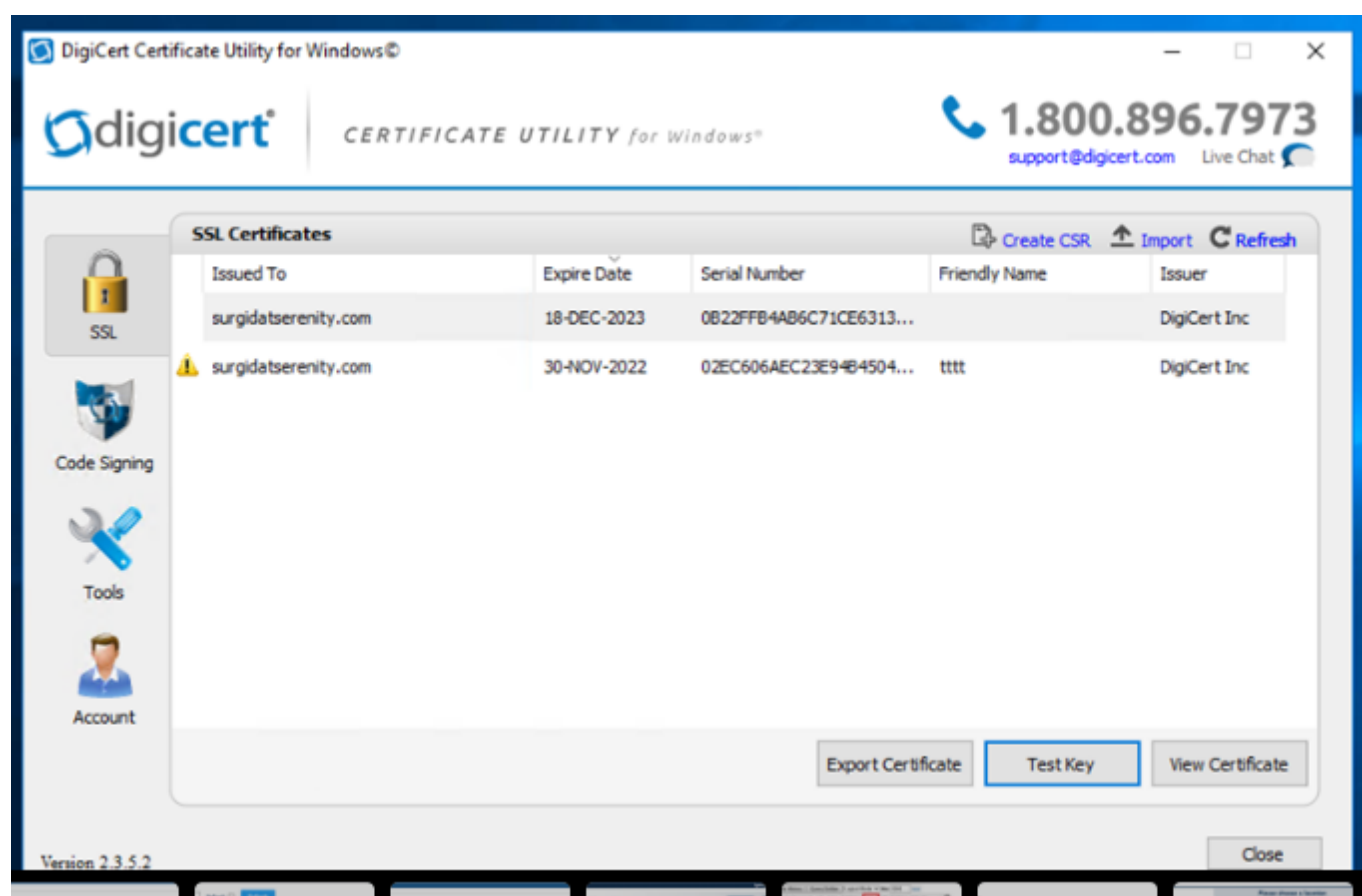
[Nezla](#) · Nov 29, 2022

## Apache with SSL Certificates

Hi Guys,

Our system admin has installed a new SSL certificate to replace the old one in our Windows server 2016.

So should it be ok to just then remove the old Certificate given that we installed the new one, knowing that the old one has been used previously or do we need to do something in existing SSL/TLS configurations ?



## Create New Configuration

The following is a list of SSL/TLS configurations:

Page size:	<input type="text" value="0"/>	Max rows:	<input type="text" value="1000"/>	Results: 7	Page:	<a href="#"> &lt;</a>	<a href="#">&lt;&lt;</a>	<b>1</b>	<a href="#">&gt;&gt;</a>	<a href="#">&gt;</a>	of 1
Name	Description	Enabled	Type								
IUDEX	IUDEX SSL	Yes	Client	<a href="#">Edit</a>	<a href="#">Delete</a>						
MAILSSL		Yes	Client	<a href="#">Edit</a>	<a href="#">Delete</a>						
NQLCERT	SSL Configuration for API Call	Yes	Client	<a href="#">Edit</a>	<a href="#">Delete</a>						
NQLS	SSL Configuration for NQL	Yes	Client	<a href="#">Edit</a>	<a href="#">Delete</a>						
RTLS	SSL Configuration for Bluzone API Call	Yes	Client	<a href="#">Edit</a>	<a href="#">Delete</a>						
ReportMail	Item process report mail	Yes	Client	<a href="#">Edit</a>	<a href="#">Delete</a>						
ShareFile		Yes	Client	<a href="#">Edit</a>	<a href="#">Delete</a>						

Thanks Guys

[#Ensemble](#)

Product version: Ensemble 2014.1

Source URL: <https://community.intersystems.com/post/apache-ssl-certificates>