
Question

[Jaime Lopez Garcia](#) · Oct 7, 2022

Doubts related to the response timeout

Good morning,

I am having some issues defining the response timeout of my webservices.

I have set the value response timeout to 20 seconds.

The failure timeout is set to 20 seconds also in order to avoid Ensemble to make retries.

I leave a screenshot of the configuration:

Connect Timeout

Response Timeout

Write Timeout

▼ Proxy Settings

Proxy Server


Proxy Port

Proxy HTTPS
☐

Proxy HTTP Tunnel
☐

ProxyHttpSSLConnect
☐

▼ Additional Settings

Schedule


Pool Size

Reply Code Actions

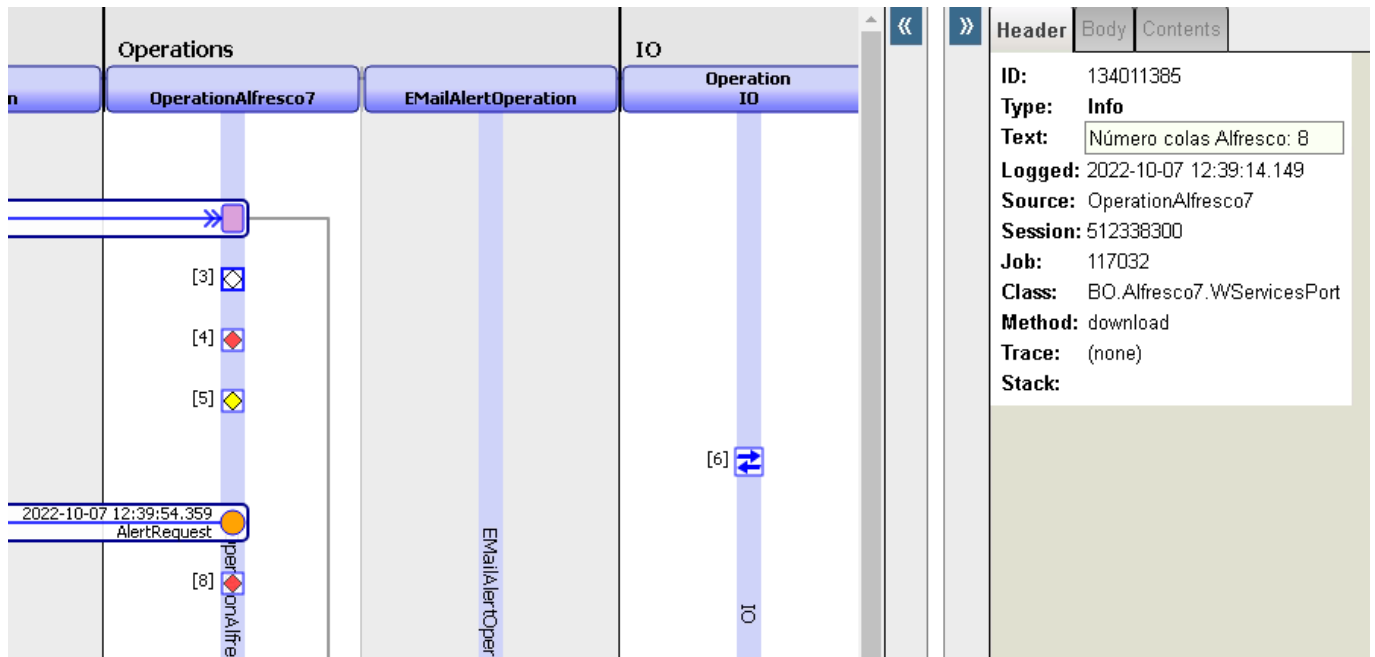
Retry Interval

Failure Timeout

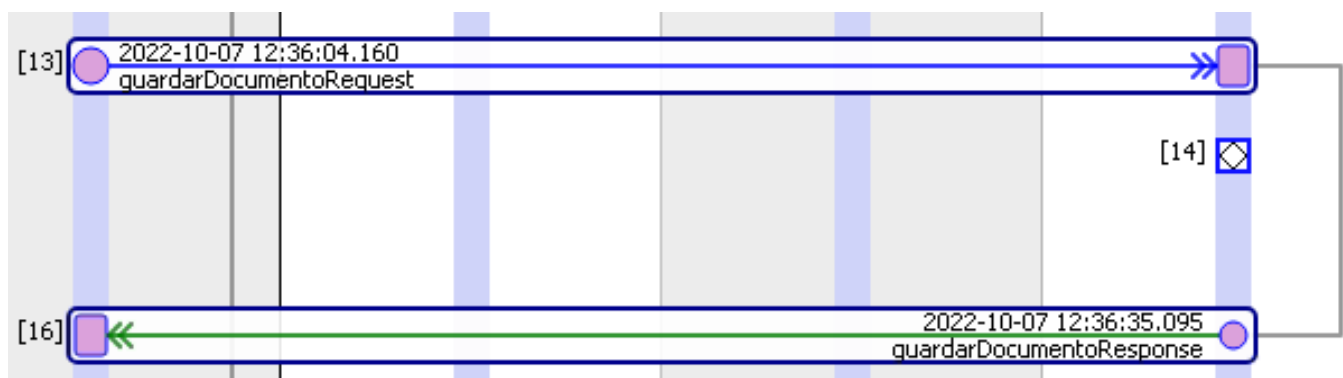
I have this configuration in two webservises.

In one of them, I observe that some requests give timeout at 20seconds but others give timeout at 40 seconds. The

next screenshots show the difference of time between the point 3 and 4.



On the other webservice, I observe that some requests give the timeout at 20 seconds, but there are others that do not give the timeout and the request is resolved after this period of 20 seconds. Next screenshot shows an example of this. The timeout is set to 20seconds. However, the request was resolved after 31 seconds.



Does anyone know how to fix this in order to avoid requests skipping the defined timeout?

Thank you in advanced.

#Ensemble

Product version: Caché 2018.1

Doubts related to the response timeout

Published on InterSystems Developer Community (<https://community.intersystems.com>)

Source URL: <https://community.intersystems.com/post/doubts-related-response-timeout>