

## Article

[Evgeniy Potapov](#) · Jan 14, 2022 1m read[Open Exchange](#)

## Real Webserver Logs Dataset

I'm happy to share with the community a web server log dataset from our longtime customer, an operating company.

Their webserver operates on Apache webserver and contains data which can be useful to analyse a load and search engines activity.

After installing the project, you will get the data for a few months that can show a typical load and activity of clients, robots and also you can see how it depends on day of week, holidays and time of a day.

The Cube is also included in package.

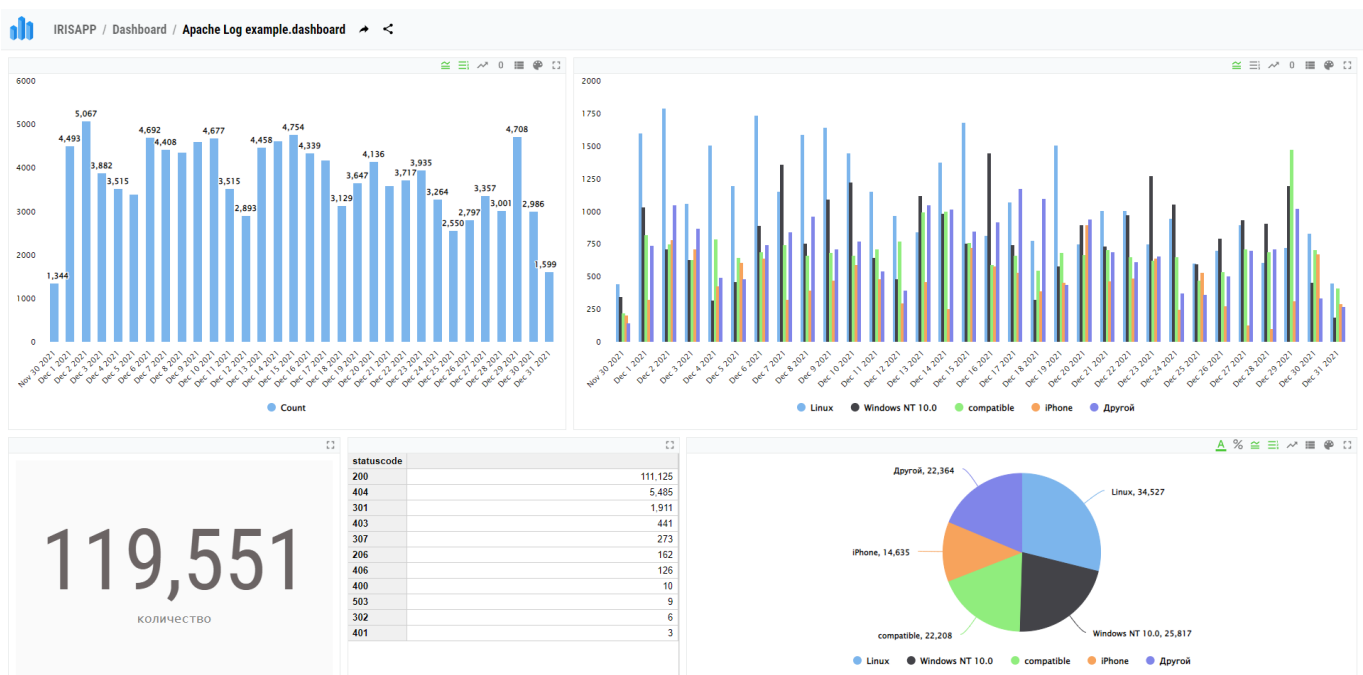
So you can use my previous project (Promjet-Stats) and see dataset in dashboards.

To make that you should install package iris-promjet

```
zpm "install iris-promjet"
```

It is already preconfigured to use dataset class.

After that you can see in DSW:



The data in this dataset is slightly different of that Google Analytics for the site reports, so I can define relations between that webserver and analytics to future correction coefficients.

Online demo of data usage can be viewed here

: <http://atscale.teccod.ru:32792/dsw/index.html#/IRISAPP/Dashboard/Apache%20Log%20example.dashboard>

And one more thing.

This project has also one useful ability to load data from your own webserver logfiles.

I think it is good enough to have separate article. Look for related article.

[#Analytics](#) [#Dashboards](#) [#InterSystems](#) [IRIS](#)

[Check the related application on InterSystems Open Exchange](#)

---

Source URL: <https://community.intersystems.com/post/real-webserver-logs-dataset>