

Question

[Matthew Shepherd](#) · Jan 6, 2022

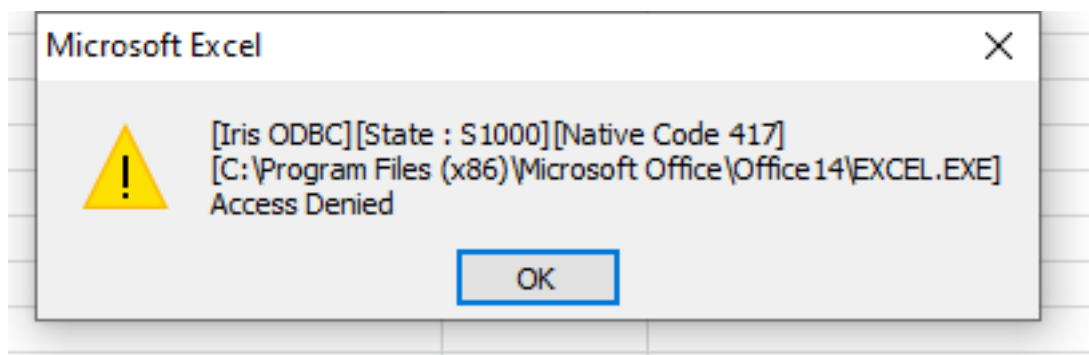
Unable to refresh data connection -

I use Microsoft Query via Excel to query an InterSystems database.

Since upgrading from CACHE to InterSystems, lots of reports fail to refresh twice - by which I mean I can open the report (which may have several separate queries) and query the database once, and then it will refuse to reconnect.

I get:

[IRIS ODBC][State : S1000][Native Code 417] Access denied



If I then close and reopen excel, I can run the query again.

If I test the odbc connection between refresh attempts, the connection is successful.

To make matters more confusing, this happens on almost all devices, but not a few high spec laptops.

So - The query works, the connection works (but only once), and on some devices there are no issues at all. Any idea on how to fix it?

[#ODBC](#) [#InterSystems](#) [IRIS](#)

Product version: IRIS 2019.1

\$ZV: 2020.1.0.215.0.20645

Source URL: <https://community.intersystems.com/post/unable-refresh-data-connection>