

Question

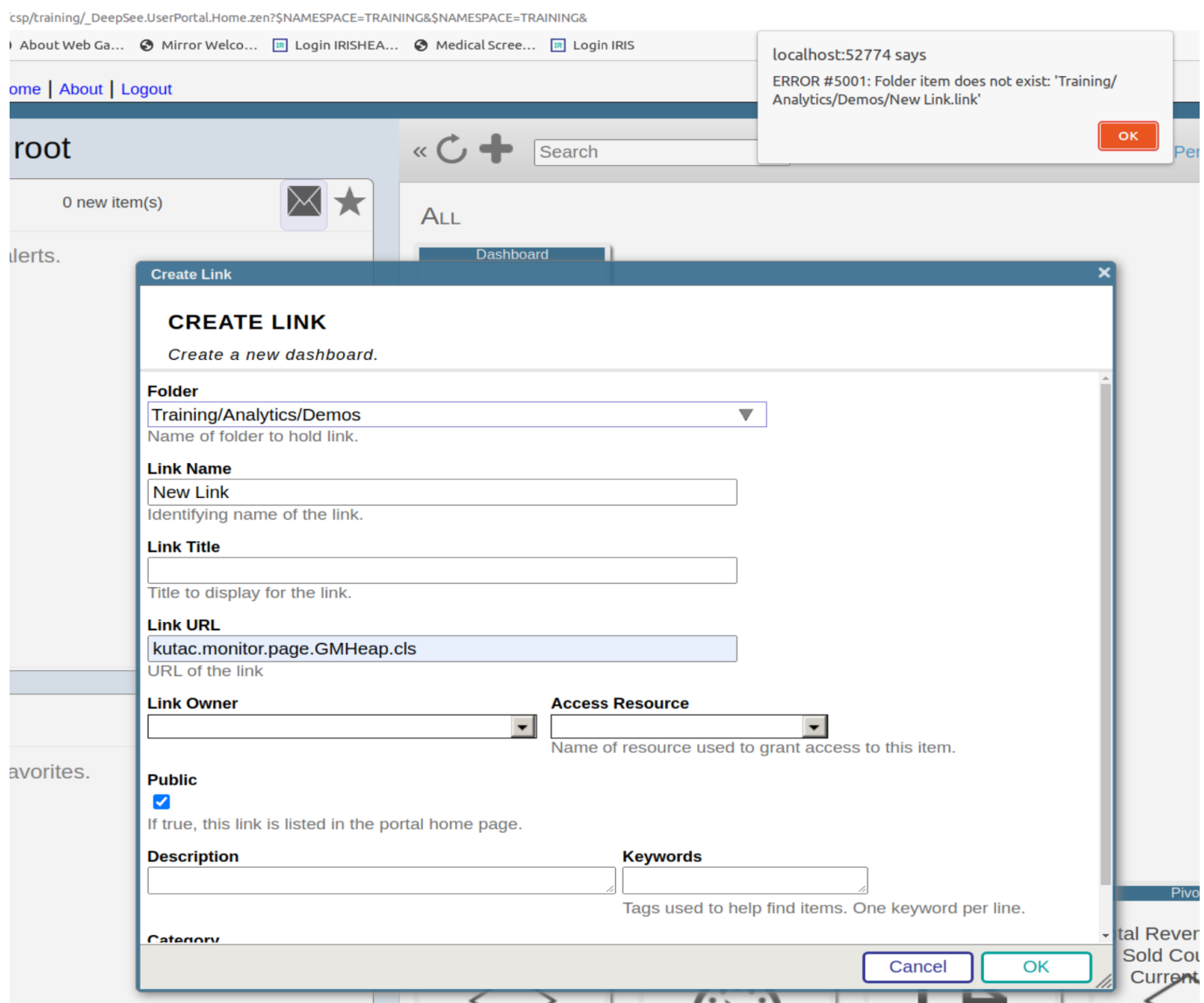
[Daniel Kutac](#) · Nov 1, 2021

adding a new link to dashboard, how?

Hi, does anyone know how to add a LINK to an ANALYTICS DASHBOARD? I'm getting an error and until now I could not find anything in documentation.

thank you for help.

to be more specific: I need to figure out how to create a .LINK type of entry into a folder so I can add it to the dashboard.



[#Analytics](#) [#Dashboards](#) [#InterSystems IRIS](#)

Product version: IRIS 2021.1

adding a new link to dashboard, how?

Published on InterSystems Developer Community (<https://community.intersystems.com>)

Source URL: <https://community.intersystems.com/post/adding-new-link-dashboard-how>