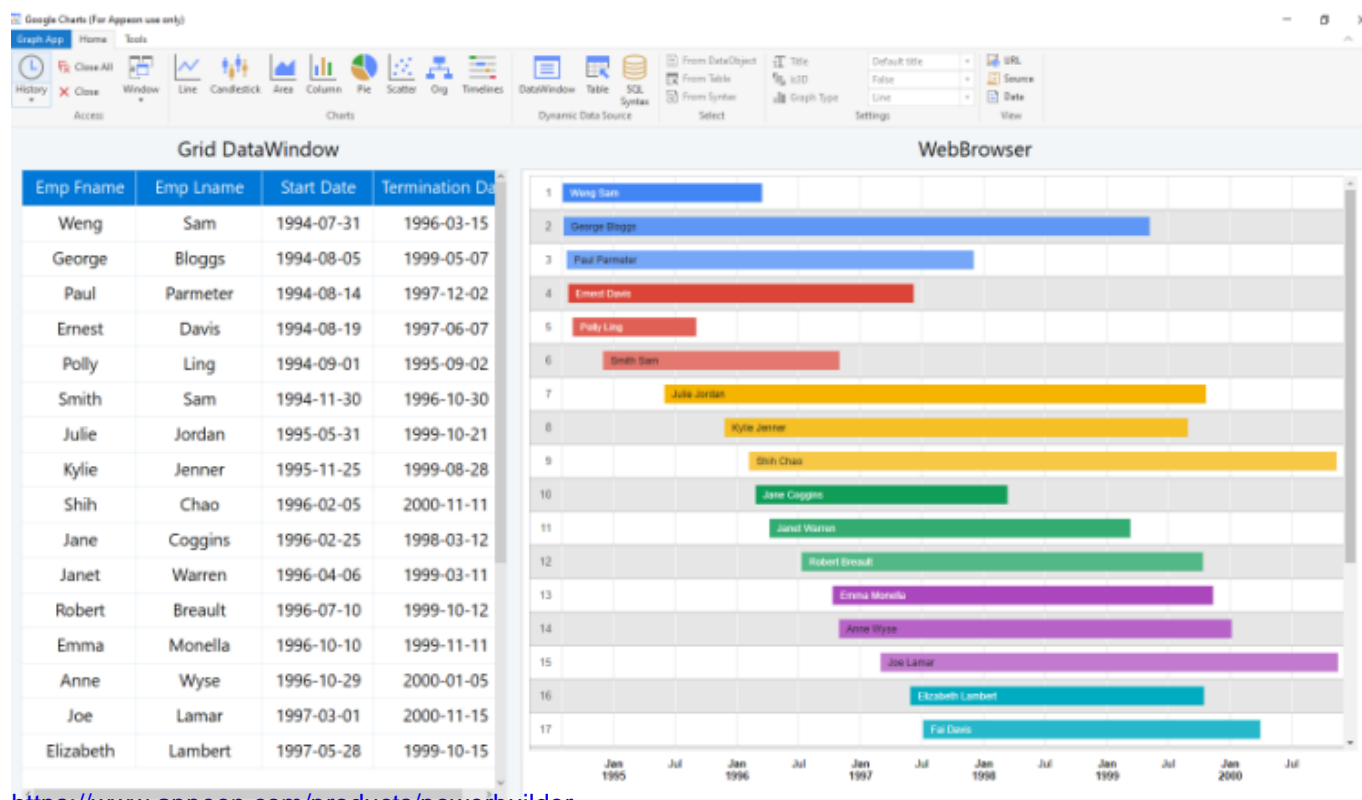


Article

[Muhammad Waseem](#) · Sep 28, 2021 1m read

Connecting to Caché with Appeon PowerBuilder by using ODBC



<https://www.appeon.com/products/powerbuilder>

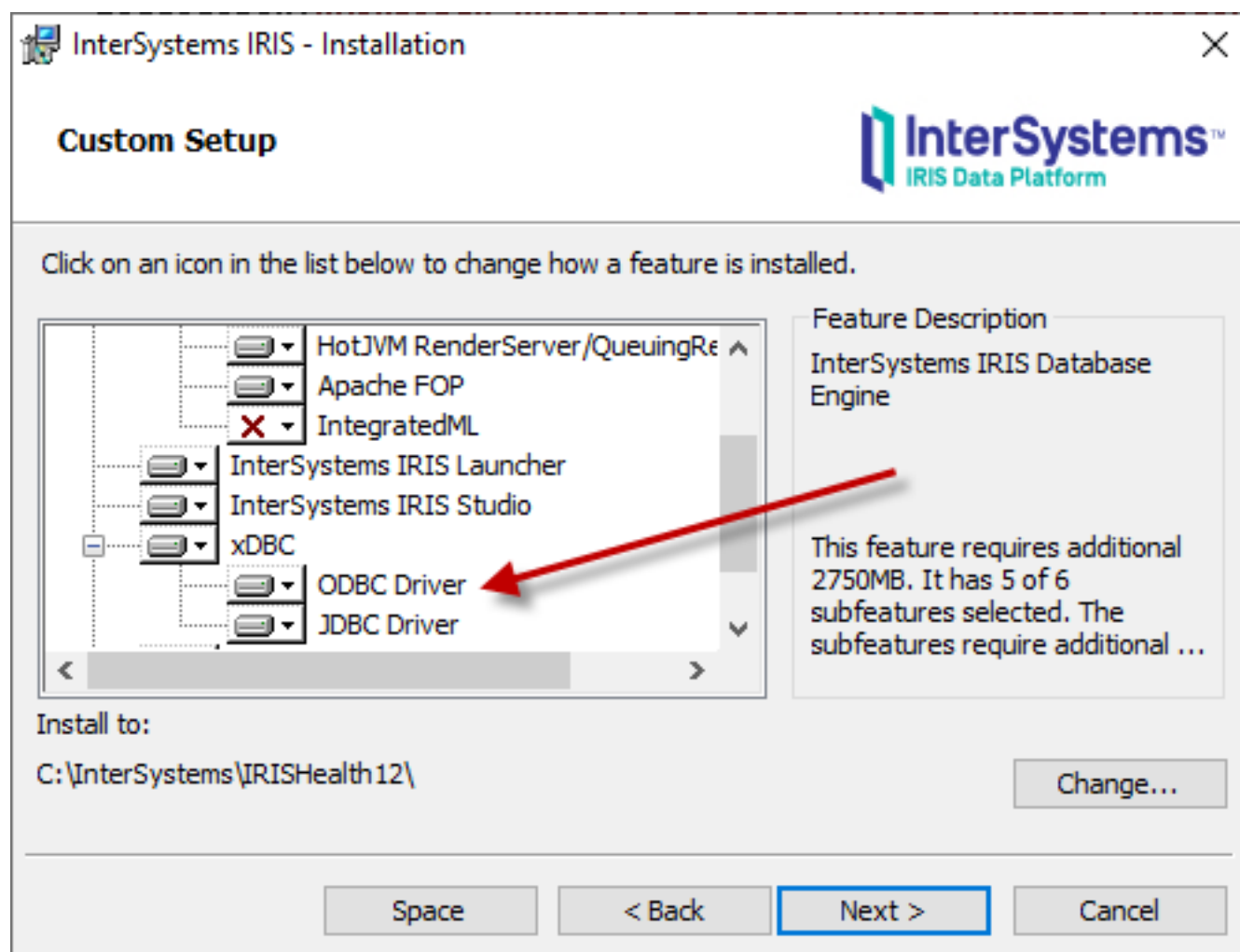
Appeon PowerBuilder is an enterprise development tool that allows you to build data-driven business applications and components.

It is one of a suite of Appeon products that together provide the tools to develop client/server, Web, mobile, and distributed applications.

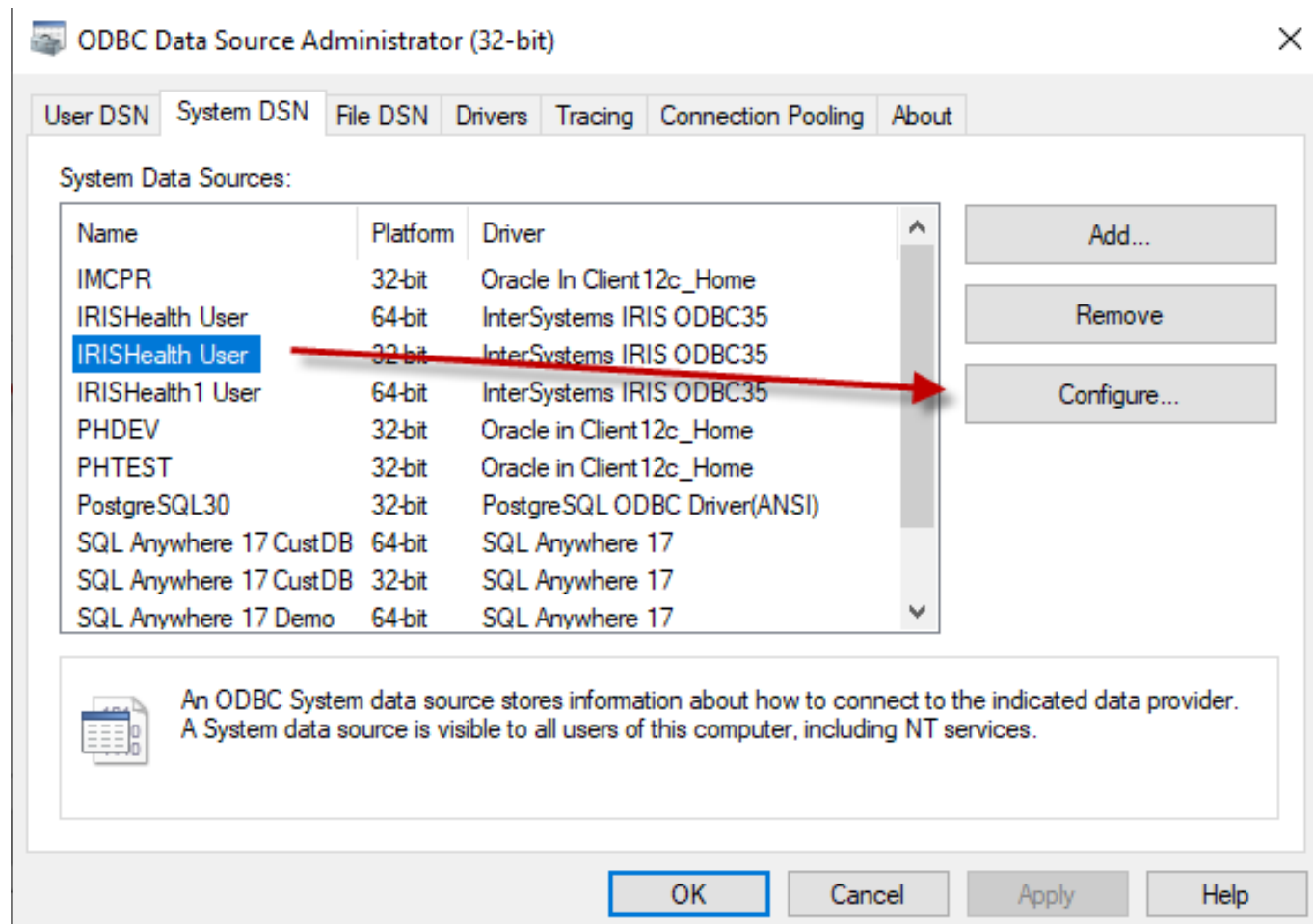
In this article I will show the steps to connect to Caché with Appeon PowerBuilder by using ODBC

Step1 :

Make sure ODBC Driver option is selected while installing IRIS



Step 2:
Configure ODBC IRIS Data Source by using ODBC Data Source Administrator



Step 3: Configure InterSystems ODBC Data Source

InterSystems ODBC Data Source Setup

Data Source

Name

IRISHealth User

Description

IRIS Instance and Namespace - IRISH

Connection

Host (IP Address)

127.0.0.1

Port

1972

Namespace

samples

Authentication Method

☒ Password

☐ Password with SSL/TLS

☐ Kerberos

Connection Security Level

☐ Kerberos

☐ Kerberos with Packet Integrity

☐ Kerberos with Encryption

User Name

_system

Password

●●●

Service Principal Name

Misc

☐ ODBC Log

☐ Static Cursors

☐ Disable Query Timeout

☐ Use Locale Decimal Symbol

☐ Unicode SQLTypes

OK


Cancel

Test Connection

Ping

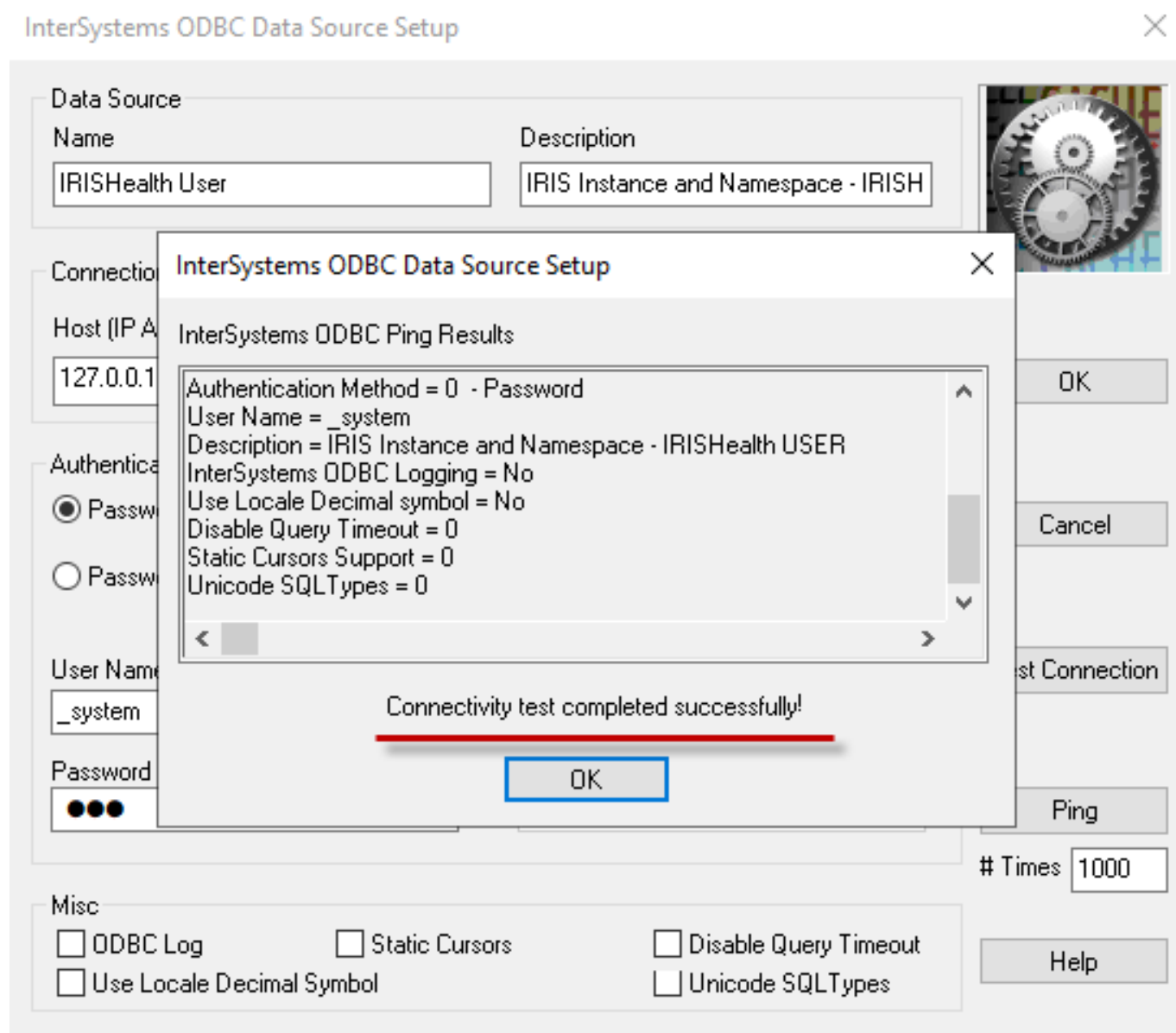
Times 1000

Help

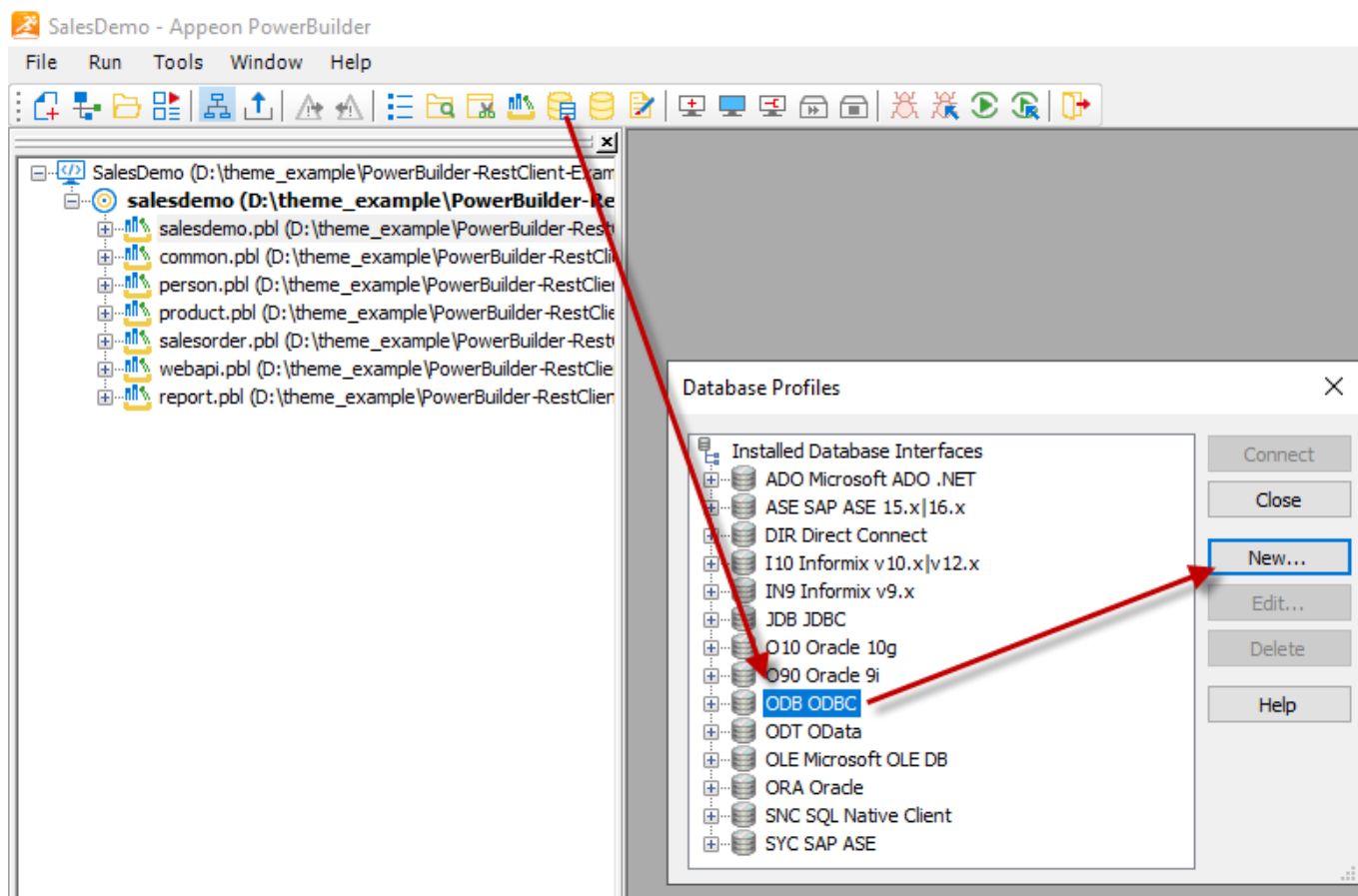


Step 4: Test the connection (make sure IRIS instance is running)

Page 4 of 9



Step 5:
From PowerBuilder open Database Profiles, Select ODB ODBC from the list and click New... button



Step 6:

Select Data Source "IRISHealth User" which we created by using ODBC administrator

Database Profile Setup - ODBC

NetworkOptionsPreview

ConnectionSystemTransactionSyntax

Profile Name:IRISHealth User

Connect Information

Data Source:IRISHealth User

User ID:☒

Password:☒

Driver-Specific Parameters:

Other

Isolation Level:(Default Driver Behavior)

☐ AutoCommit Mode☐ Prompt for Database Information

☒ Commit on Disconnect☐ Generate Trace

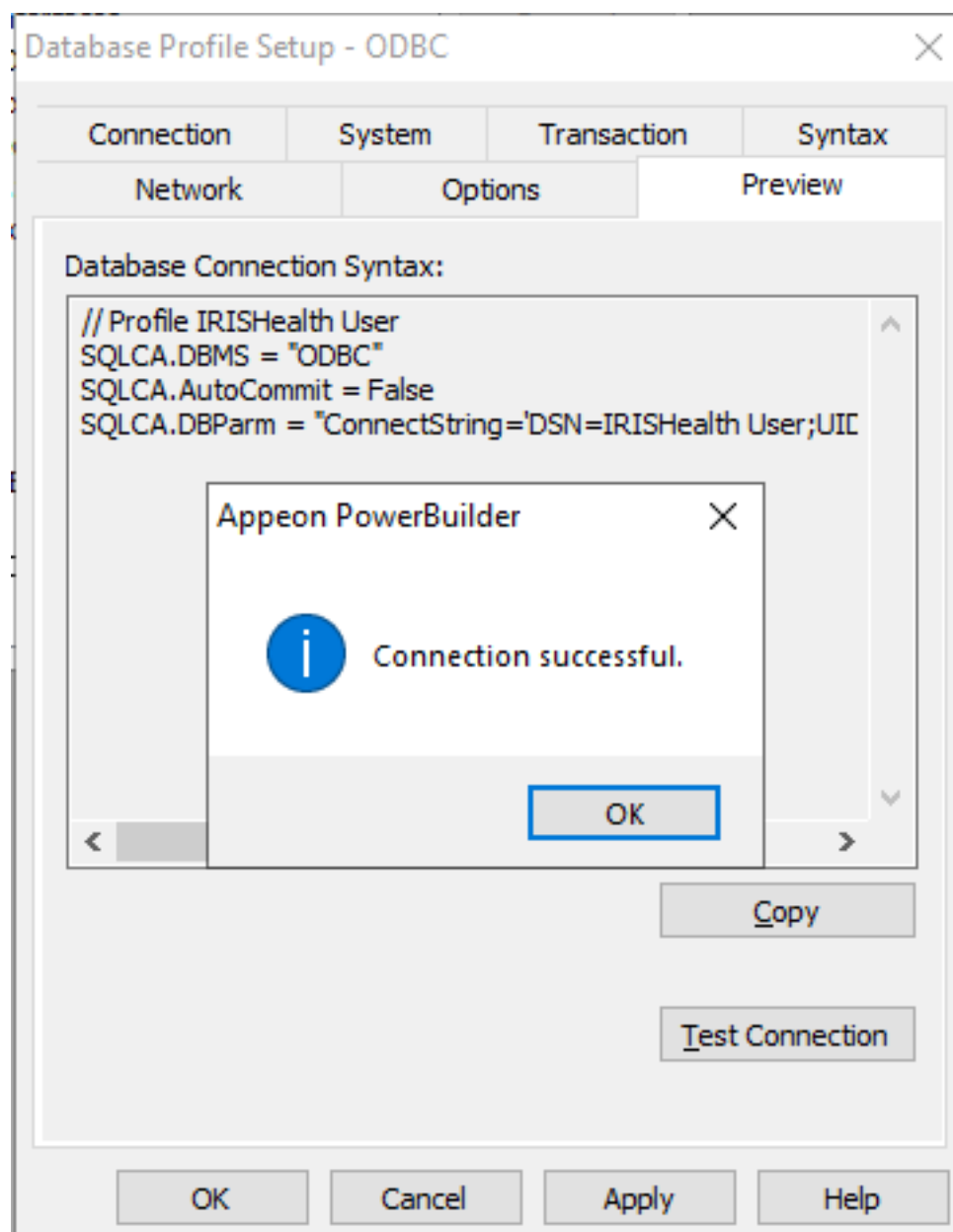
OK

Cancel

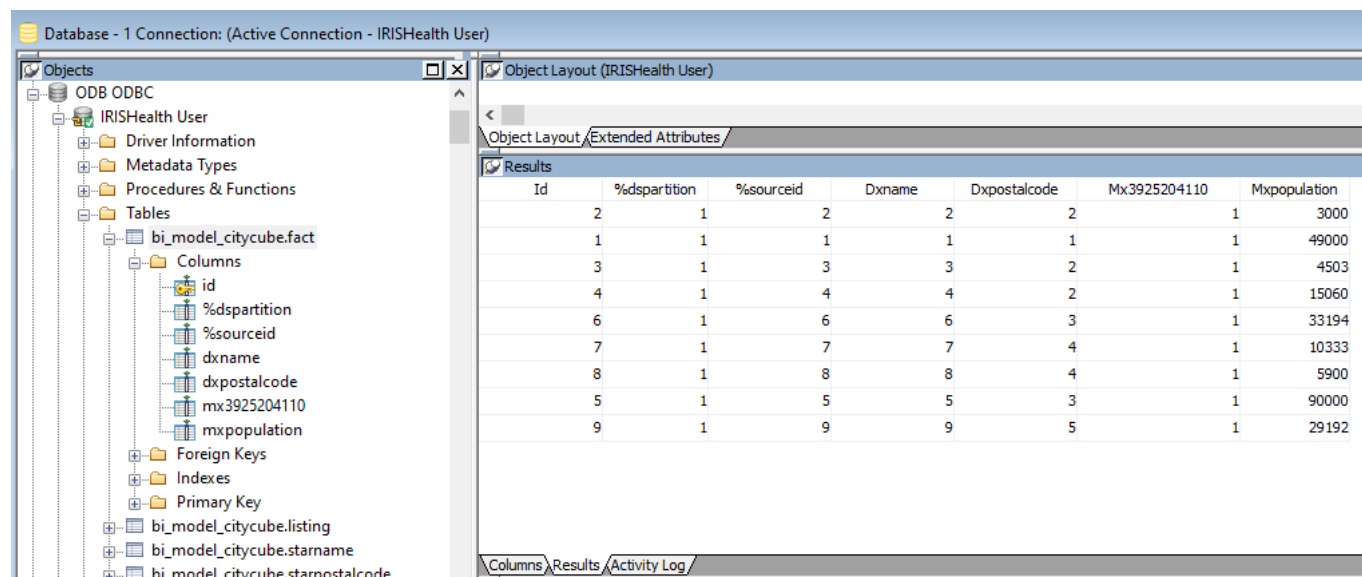
Apply

Help

Step 7: Test the connection under Preview tab by clicking Test Connection button



Congratulation! We have established successful connection to Caché
Now we can view Tables and data by using PowerBuilder database painter



The screenshot shows the PowerBuilder interface with two windows. The 'Objects' window on the left displays a tree view of the database schema for 'IRISHealth User', including 'Driver Information', 'Metadata Types', 'Procedures & Functions', 'Tables', 'Columns', 'Foreign Keys', 'Indexes', and 'Primary Key'. The 'Object Layout (IRISHealth User)' window on the right shows the 'Results' tab with a table of data. The table has columns: Id, %dspartition, %sourceid, Dxname, Dxpostalcode, Mx3925204110, and Mxpopulation. The data is as follows:

Id	%dspartition	%sourceid	Dxname	Dxpostalcode	Mx3925204110	Mxpopulation
2	1	2	2	2	1	3000
1	1	1	1	1	1	49000
3	1	3	3	2	1	4503
4	1	4	4	2	1	15060
6	1	6	6	3	1	33194
7	1	7	7	4	1	10333
8	1	8	8	4	1	5900
5	1	5	5	3	1	90000
9	1	9	9	5	1	29192

Thanks

[#Databases](#) [#ODBC](#) [#Caché](#) [#InterSystems](#) [IRIS for Health](#)

Source

URL: <https://community.intersystems.com/post/connecting-cach%C3%A9-appeon-powerbuilder-using-odbc>