
Question

[reach.gr G](#) · Aug 4, 2021

How to find the Primary & Foreign Keys & How to access tables with String as Parameter

Trackcare 2021.2

Please may I know how to access SQL parameter with string as datatype with NO reference to SQL Table and SQL Column.

Hi Experts,

I have these two clarifications to make:

1. I am struggling to understand the process and method of accessing the SQL table with no reference to SQL parameter or Table but string

This is what I tried: Tired to create ERD diagrams and try to extract Primary and Foreign keys to associate, but I cannot in this case

I would like to do something like this

```
Select * FROM  
  
SQLUser.SS_User SSU  
  
LEFT JOIN SQLUser.CT_Loc CTL ON CTL.CTLOC_Desc = ?? < Cannot find Info here>  
  
WHERE SSUSR_Initials = 'xxxx'
```

Example:

Caption	Name	SQLTable	SQLColumn	DataType	ValueGet
Allow Change of Location at L	SSUSRChangeLocation	SS_User	SSUSR_ChangeLocation	%Library.String	s val=\$s(obj:obj.SSUSRChangeLocation,1:"")
Default Location	SSUSRDefaultLocation	SS_User	SSUSR_DefaultLocation	%Library.String	s val=\$s(obj:obj.SSUSRDefaultLocation,1:"")
Department Head	SSUSRDepartmentHead	SS_User	SSUSR_DepartmentHead	%Library.String	s val=\$s(obj:obj.SSUSRDepartmentHead,1:"")
Doctor Flag	SSUSRDoctorFlag	SS_User	SSUSR_DoctorFlag	%Library.String	s val=\$s(obj:obj.SSUSRDoctorFlag,1:"")
Given Name	SSUSRGivenName	SS_User	SSUSR_GivenName	%Library.String	s val=\$s(obj:obj.SSUSRGivenName,1:"") i val="" s val=
Login ID	SSUSRLoginID	SS_User	SSUSR_LoginID	%Library.String	s val=\$s(obj:obj.SSUSRLoginID,1:"ERROR!")
Updated Date and Time	SSUSRLastUpdateDate	SS_User	SSUSR_LastUpdateDate	%Library.Date	s val=##Class(web.sys.Conversions).DateLogicalToHt
Updated Time	SSUSRLastUpdateTime	SS_User	SSUSR_LastUpdateTime	%Library.Time	s val=##Class(web.sys.Conversions).TimeLogicalToHt
Nurse Flag	SSUSRNurseFlag	SS_User	SSUSR_NurseFlag	%Library.String	s val=\$s(obj:obj.SSUSRNurseFlag,1:"")
Other Name	SSUSROtherName	SS_User	SSUSR_OtherName	%Library.String	s val=\$s(obj:obj.SSUSROtherName,1:"ERROR!")
Payroll Number	SSUSRPayrollNumber	SS_User	SSUSR_PayrollNumber	%Library.Float	s val=\$s(obj:obj.SSUSRPayrollNumber,1:"ERROR!")
Surname	SSUSRSurname	SS_User	SSUSR_Surname	%Library.String	s val=\$s(obj:obj.SSUSRSurname,1:"") i val="" s val=%
Title (Free Text)	SSUSRTitle	SS_User	SSUSR_Title	%Library.String	s val=\$s(obj:obj.SSUSRTitle,1:"ERROR!")
Updated User Code	UpdateSSUSRInitials	SS_User	SSUSR_Initials	User.SSUser	s val="" i obj,obj.SSUSRLastUpdateUserDR s val=obj.:
Security Group	SSGRPDesc	SS_Group	SSGRP_Desc	User.SSGroup	s val="" i obj,obj.SSUSRGroup s val=obj.SSUSRGroup.
Preferred Language	CTLANDesc	SS_Language	CTLAN_Desc	User.SSLanguage	s val="" i obj,obj.SSUSRCTLANDR s val=obj.SSUSRCTL
Comments	SSUSRComments	SS_User	SSUSR_Comments	%Library.String	s val=##Class(web.sys.Conversions).LongTextLogical
User Type	STAFFDesc	CT_StaffType	STAFF_Desc	User.CTStaffType	s val="" i obj,obj.SSUSRStaffTypeDR s val=obj.SSUSR:
Password	SSUSRPassword	SS_User	SSUSR_Password	%Library.String	;s val="*****" ;s val=##Class(web.SSUser).Encryp
Pin Number	SSUSRPin	SS_User	SSUSR_Pin	%Library.String	s val="Field not in use"
Lagon Location	CTLOCDesc	CT_Loc	CTLOC_Desc	%Library.String	s val=\$s(request.Get("DefLoginLoc")="" :%request
	ID			%Library.String	s val=\$s(obj:obj.%Id(),1:"ERROR!")
Confirm Password	ConfirmPassword	SS_User	SSUSR_Password	%Library.String	;s val="*****" ;s(obj:obj.SSUSRPassword,1:"ERR
Retype PIN	RetypePIN	NONE	NONE	%Library.String	s val=\$s(obj:obj.SSUSRPin,1:"ERROR
Other Logon Locations	OtherUserLogonLoc			%String	

2. Similarly CT_Loc table has

CTLOC_Code

CT_LOC_Desc ,

CT_LOC_Hospital_DR->Hosp_Desc

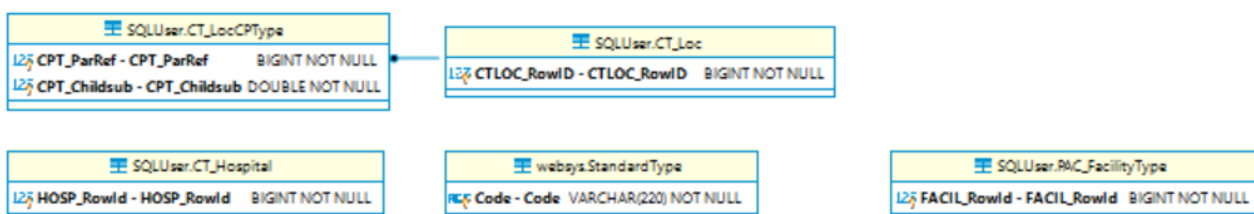
etc – This is a working code

Same as

```
SELECT * from SQLUser.CT_Hospital CTH
```

```
LEFT JOIN SQLUser.PAC_FacilityType PFT ON CTH.HOSP_Desc = PFT.FACIL_Desc
```

But please may I know how am I supposed to know when table ' s primary key / foreign key do not match and doesn ' t show any relationship in ERD as below.



But when I extracted the ERD diagram of CT_Loc and CT_Hospital they do not have any relationship and when I used the rowID, I got wrong answers.

Any detailed explanation will help, with reference to documentation will be appreciated.

[#Databases](#) [#Object Data Model](#) [#SQL](#) [#InterSystems IRIS for Health](#)

Source

URL: <https://community.intersystems.com/post/how-find-primary-foreign-keys-how-access-tables-string-parameter>