

How to work with InterSystems IRIS from DataGrip

Article

[Eduard Lebedyuk](#) · Jan 12, 2021



1m read

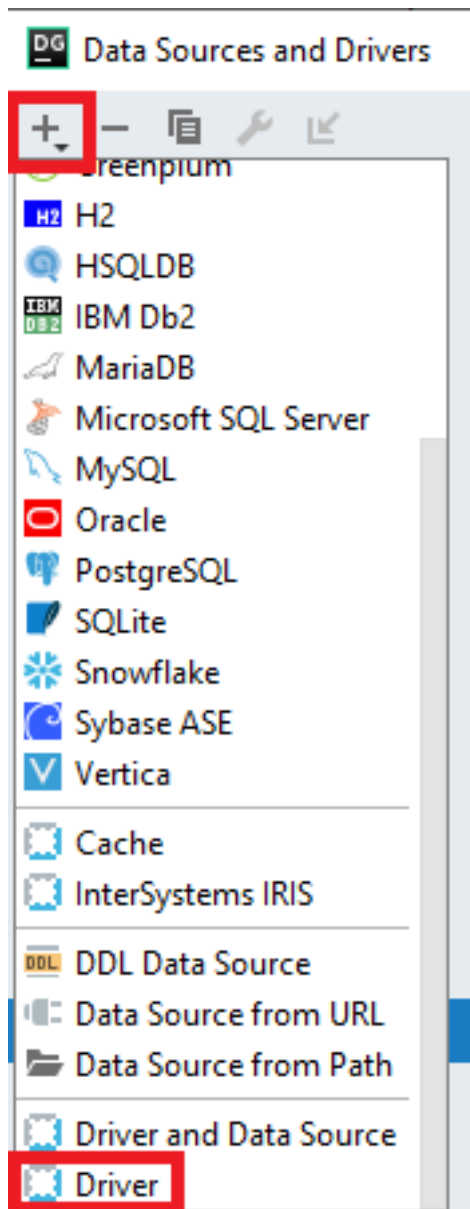
How to work with InterSystems IRIS from DataGrip

[DataGrip](#) is a multi-engine database environment targeting the specific needs of professional SQL developers, DataGrip makes working with databases an enjoyable and productive experience.

To work with InterSystems IRIS from DataGrip you'll need to add InterSystems JDBC driver first (once per DataGrip) and after that add all your InterSystems IRIS connections.

Part 1: Add InterSystems IRIS JDBC Driver

1. Go To File ? DataSources
2. Go to + ? Driver

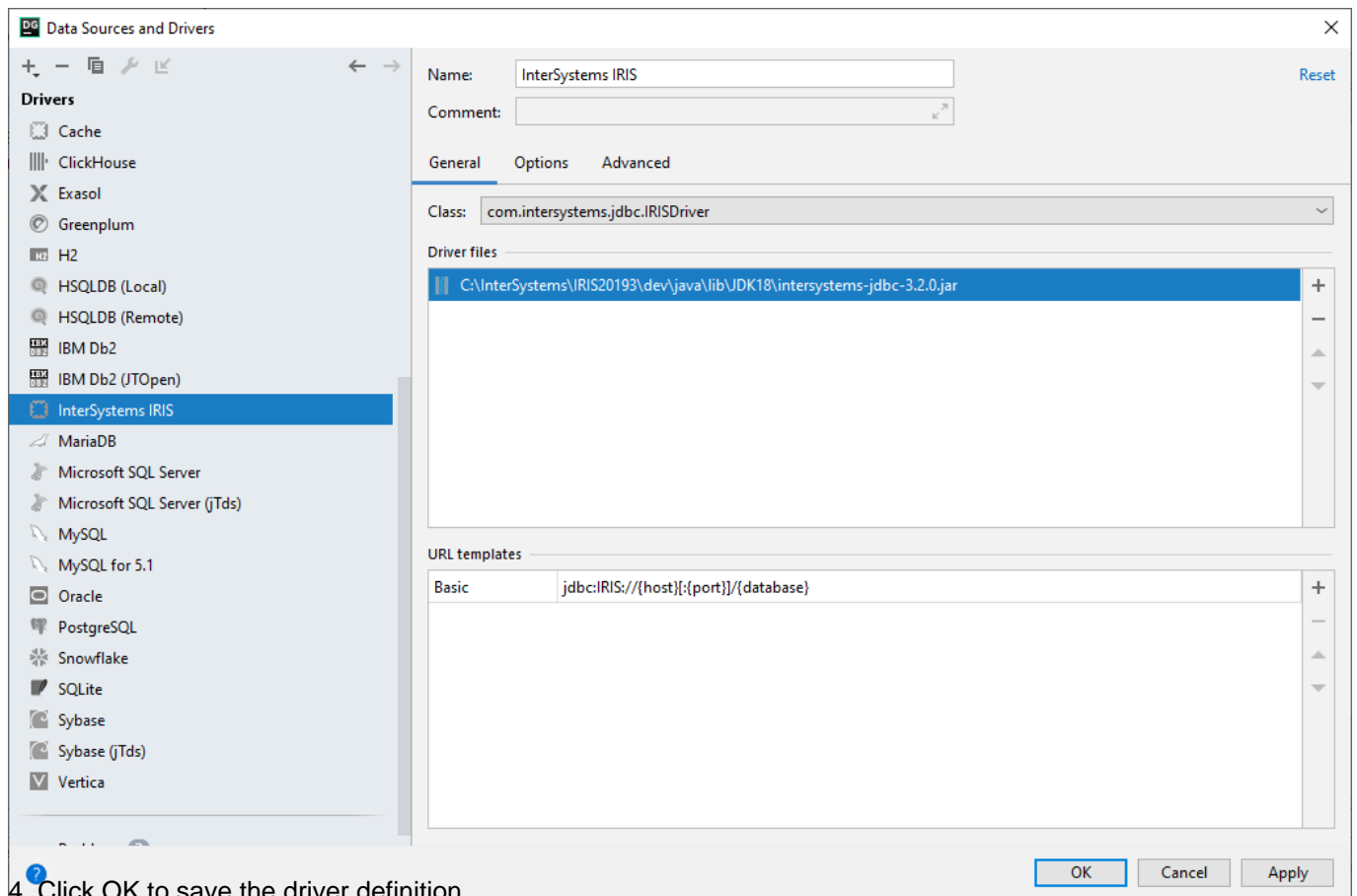


3. Set Driver properties:

- Name: InterSystems IRIS
- Class: com.intersystems.jdbc.IRISDriver
- Add JDBC Driver file: path to /<IRIS>/dev/java/lib/JDK18/intersystems-jdbc-3.2.0.jar (version can change, also if you don't have InterSystems IRIS installed, you can download the drivers [here](#))
- Add URL Template: Basic jdbc:IRIS://{host}[:{port}]/{database} (you can add additional parameters as described [here](#))

How to work with InterSystems IRIS from DataGrip

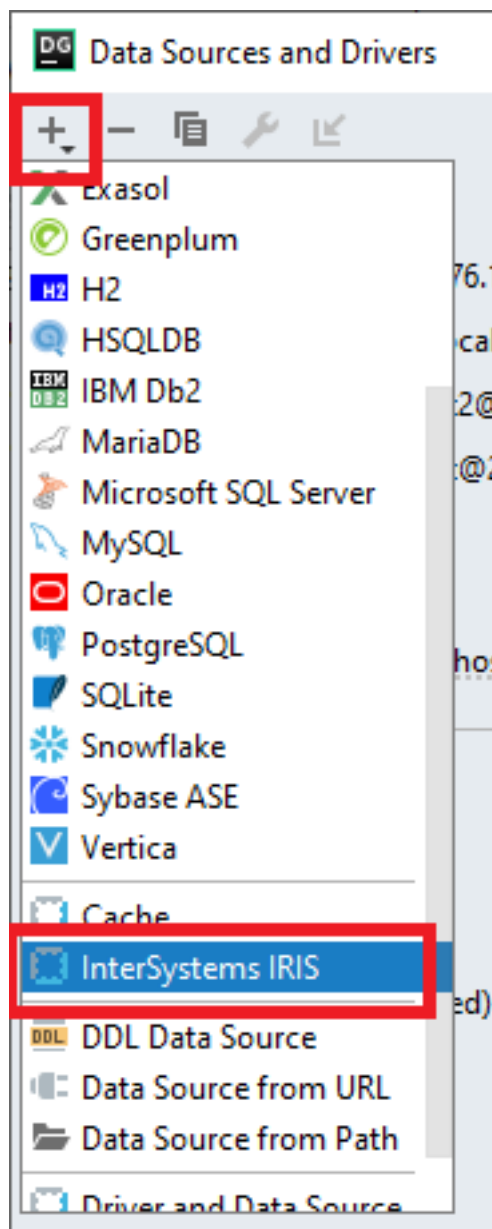
Published on InterSystems Developer Community (<https://community.intersystems.com>)



4. Click OK to save the driver definition.

Part 2: Add InterSystems IRIS Instance

1. In the same DataSources window go to +?InterSystems IRIS



2. Specify connection settings depending on your instance and click Test Connection. You'll see an error or connection successful.

The screenshot shows a 'Connection Configuration' dialog box for InterSystems IRIS. The 'Name' field is 'InterSystems IRIS -Localhost'. The 'Host' is 'localhost', 'Port' is '51776', 'User' is '_SYSTEM', and 'Database' is 'USER'. The 'URL' field contains 'jdbc:IRIS://localhost:51776/USER'. A 'Test Connection' button is visible, and below it, a green checkmark indicates a successful connection. The test results show: 'DBMS: InterSystems IRIS (ver. InterSystems IRIS Version 2020.4.0ML.519 xDBC Protocol Version 61)', 'Case sensitivity: plain=mixed, delimited=mixed', 'Driver: InterSystems IRIS JDBC (ver. 2020.4.0.519, JDBC4.2)', and 'Ping: 43 ms'. At the bottom right, there are 'OK', 'Close', and 'Apply' buttons.

It it's a new local installation the defaults likely are:

- Host: localhost
- Port: 1972
- User: _SYSTEM
- Password: SYS
- Database: USER

3. Click OK to save.

That's it! Now you can query and explore InterSystems IRIS through Datagrip.

[#JDBC](#) [#SQL](#) [#InterSystems IRIS](#)

10 1 0 0 61

How to work with InterSystems IRIS from DataGrip

Published on InterSystems Developer Community (<https://community.intersystems.com>)

Source URL: <https://community.intersystems.com/post/how-work-intersystems-iris-datagrip>