

Article

[Henrique Dias](#) · Dec 27, 2020 2m read

[Open Exchange](#)

How difficult is it to create a report using InterSystems Reports?

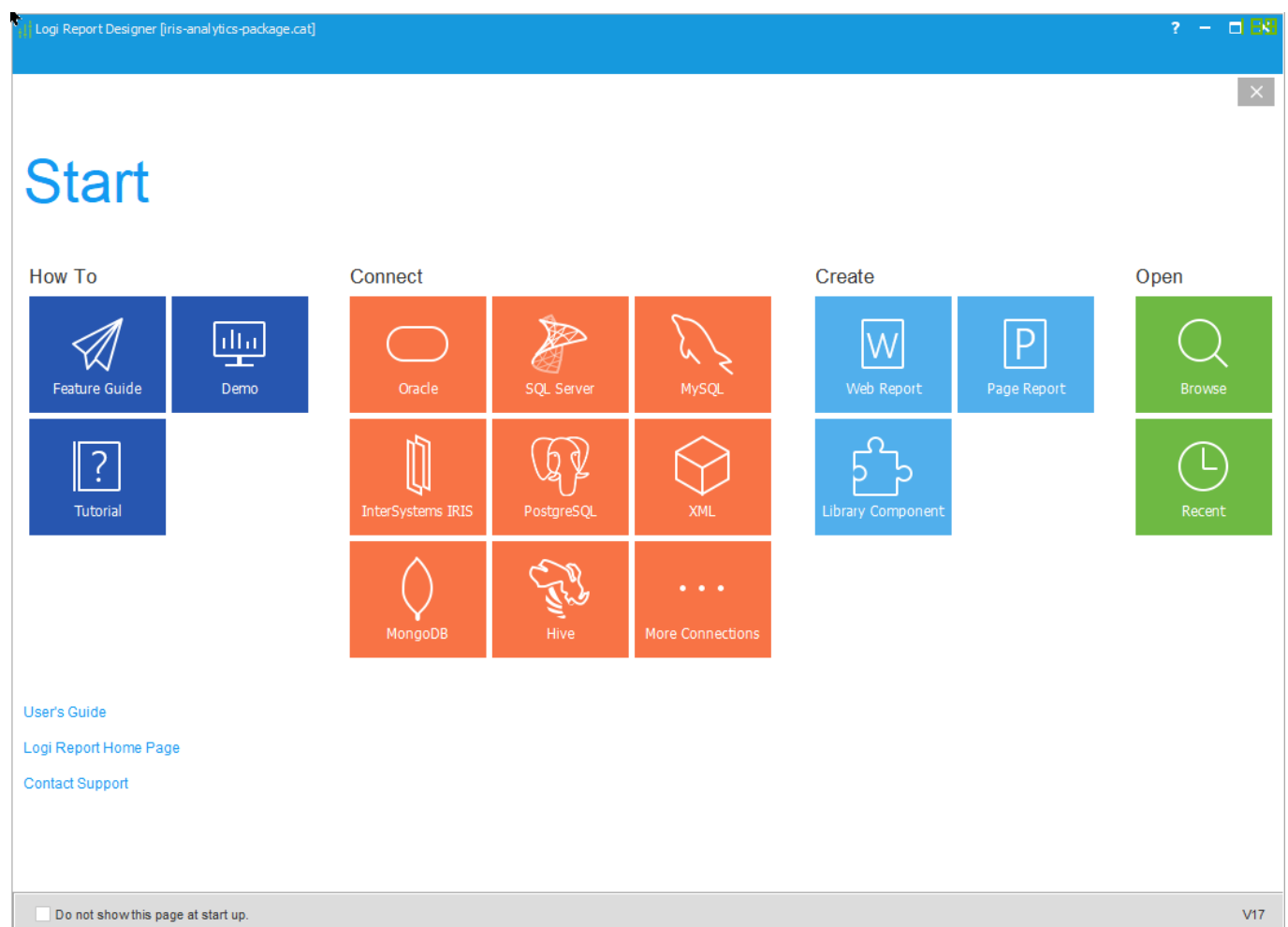
How difficult is it to create a report using InterSystems Reports?

Spoiler

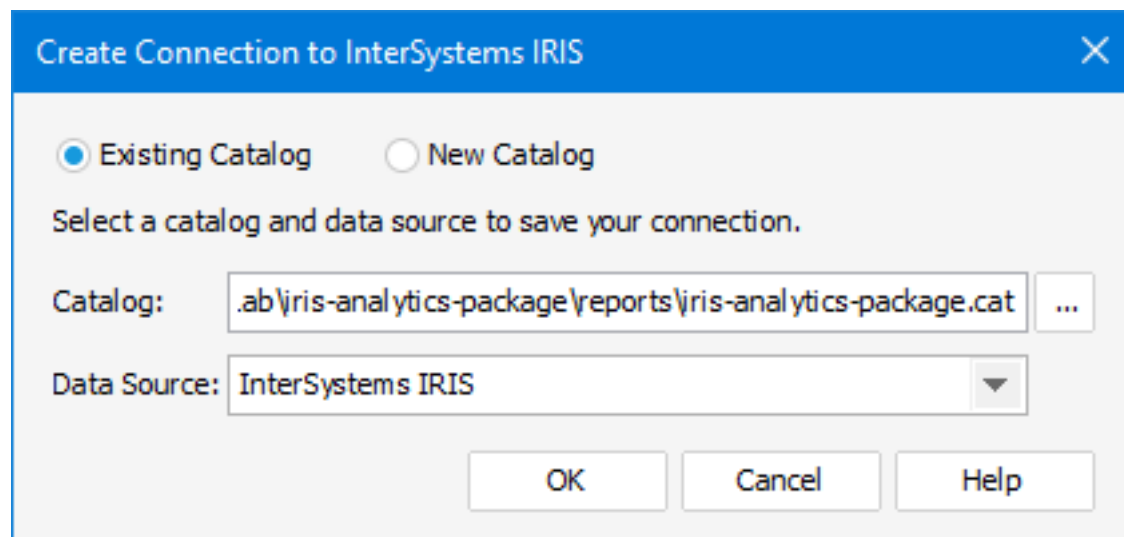
I created two simple examples using the InterSystems IRIS + InterSystems reports and will try to share how easy it is to set up these two applications together!

In the next few paragraphs, I describe a step-by-step guide to this process's ease and simplicity.

After installing the Logi Report Designer, open and choose the InterSystems IRIS icon.

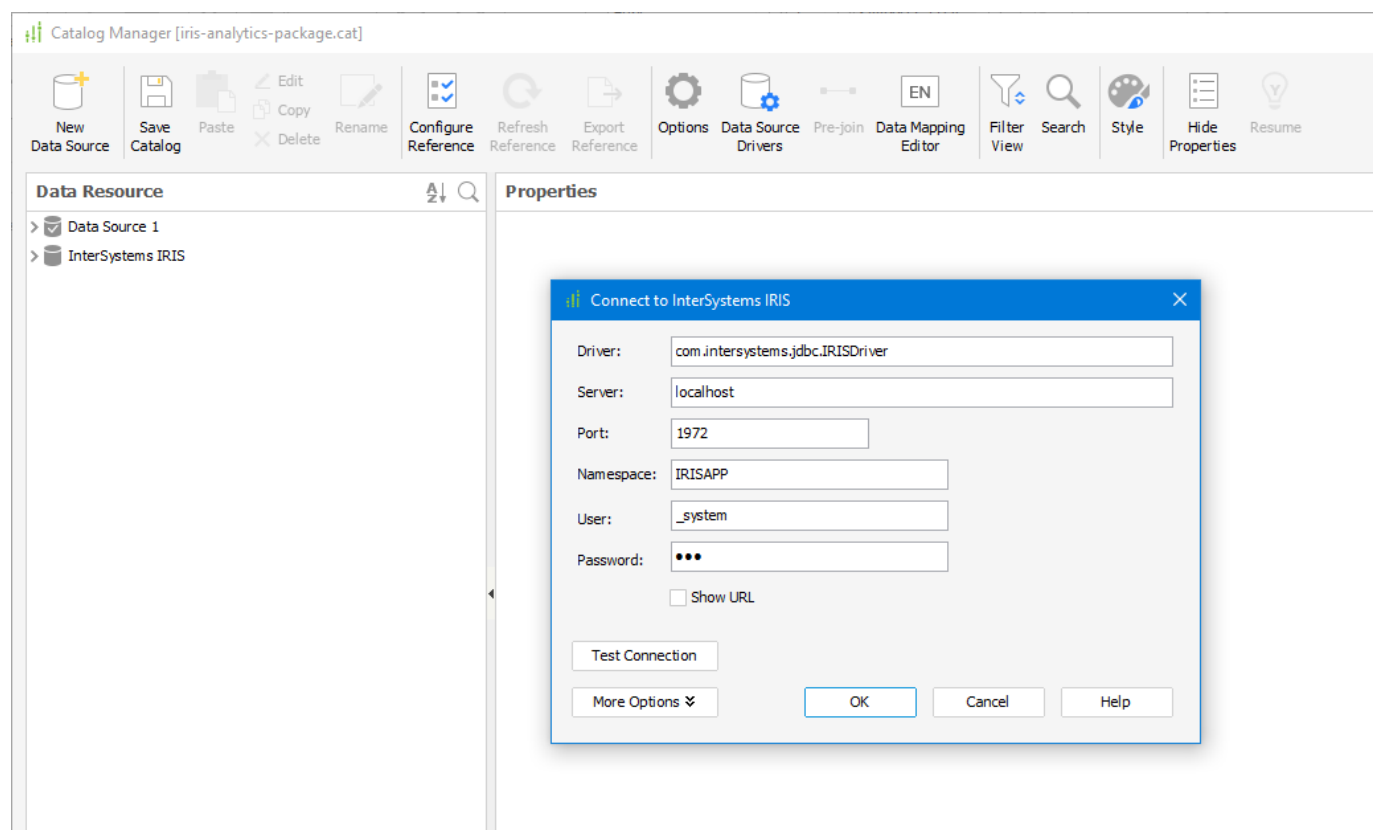


For the second step, you have the option of choosing an existing Catalog or creating a new one.

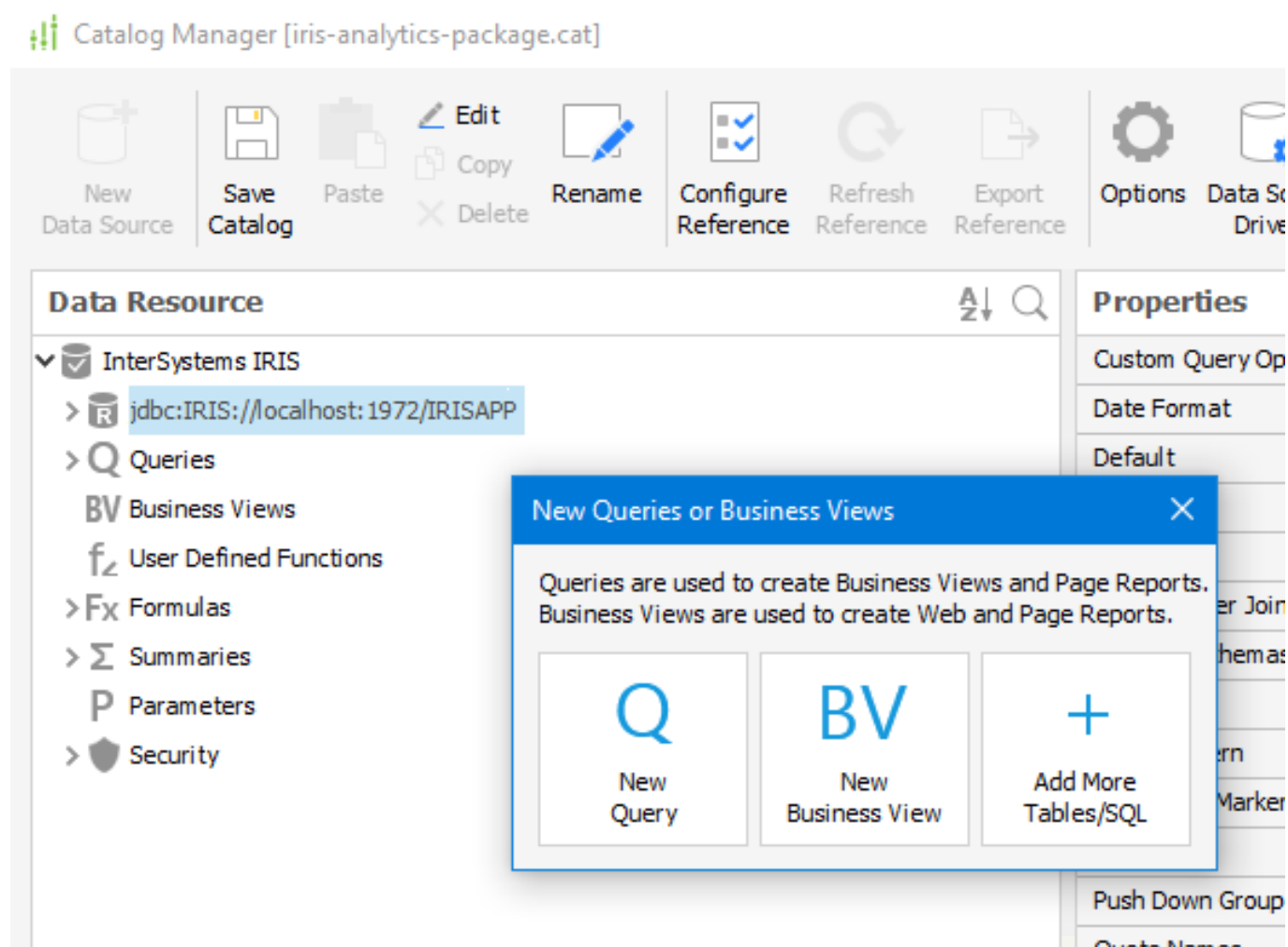


We will create a new catalog, saving it in your chosen folder, then we will create a new DataSource.

Fill in the fields with the server's IP or DNS name, port, namespace, user, and password.



You can then add tables, views, and queries to your data source.



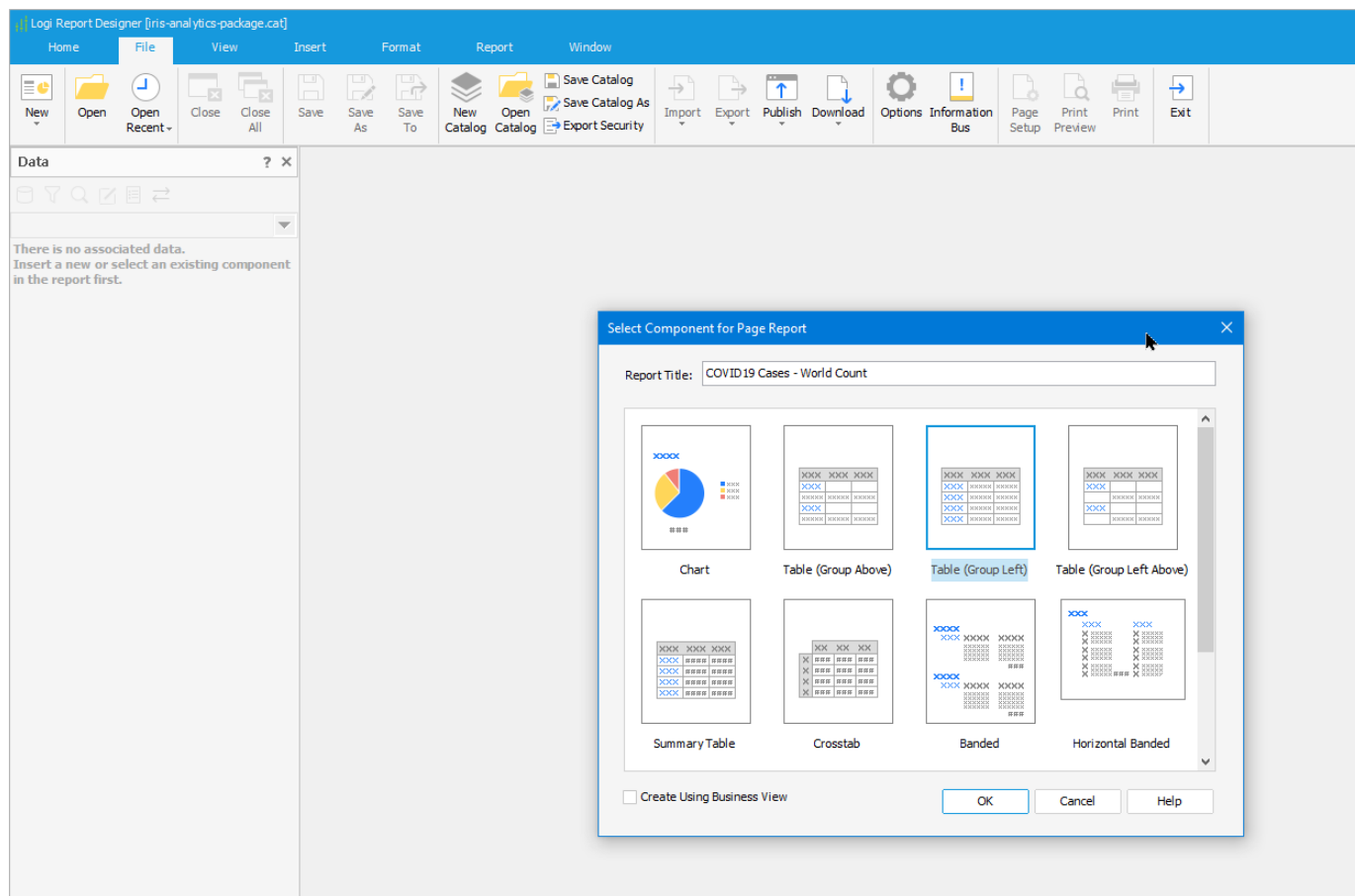
With your connection information, your tables, views, and/or queries configured, let's move on.

Clicking on the icon New, choose New Report.

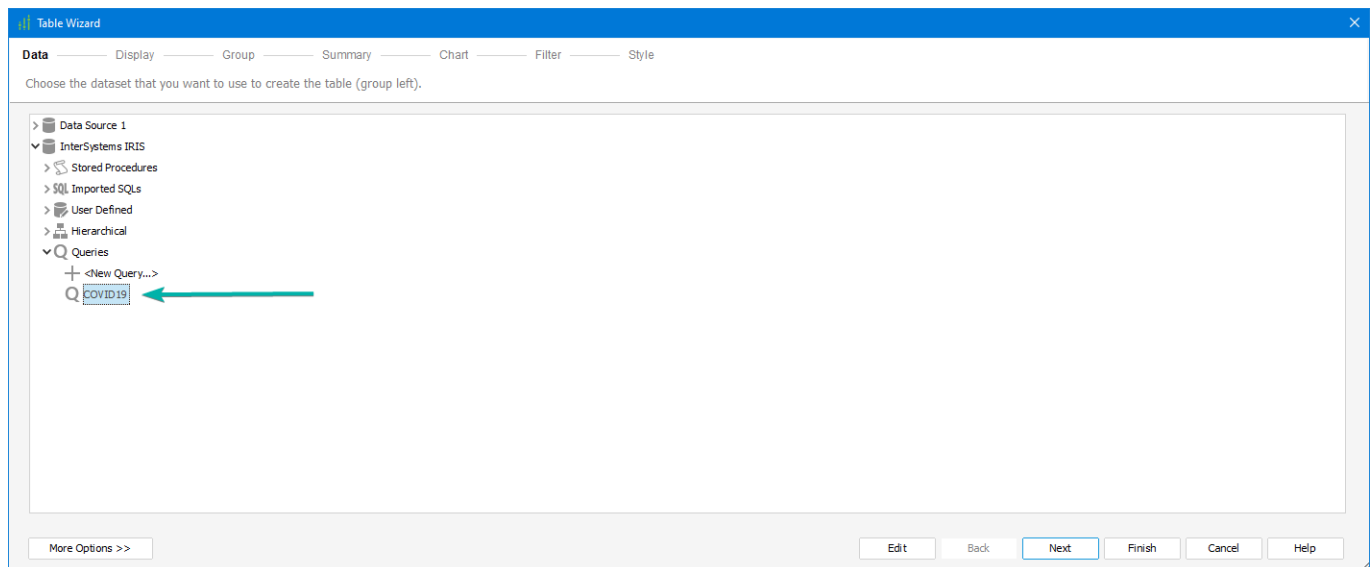
For our report, I chose the Table (Group Left) as the image below:

How difficult is it to create a report using InterSystems Reports?

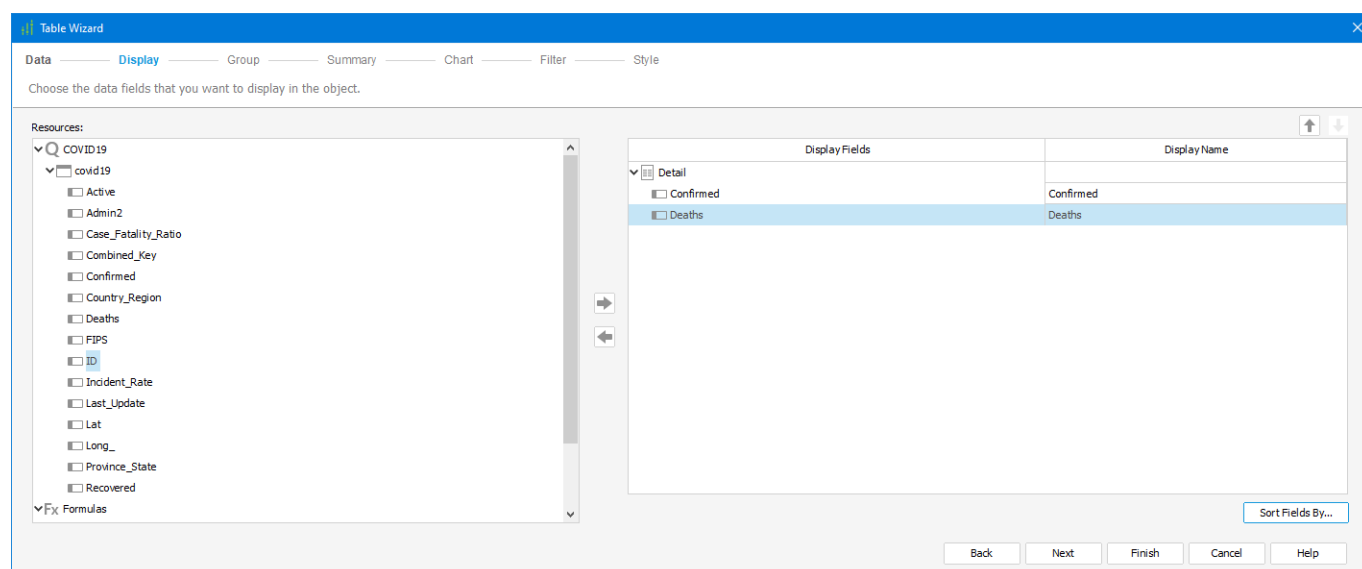
Published on InterSystems Developer Community (<https://community.intersystems.com>)



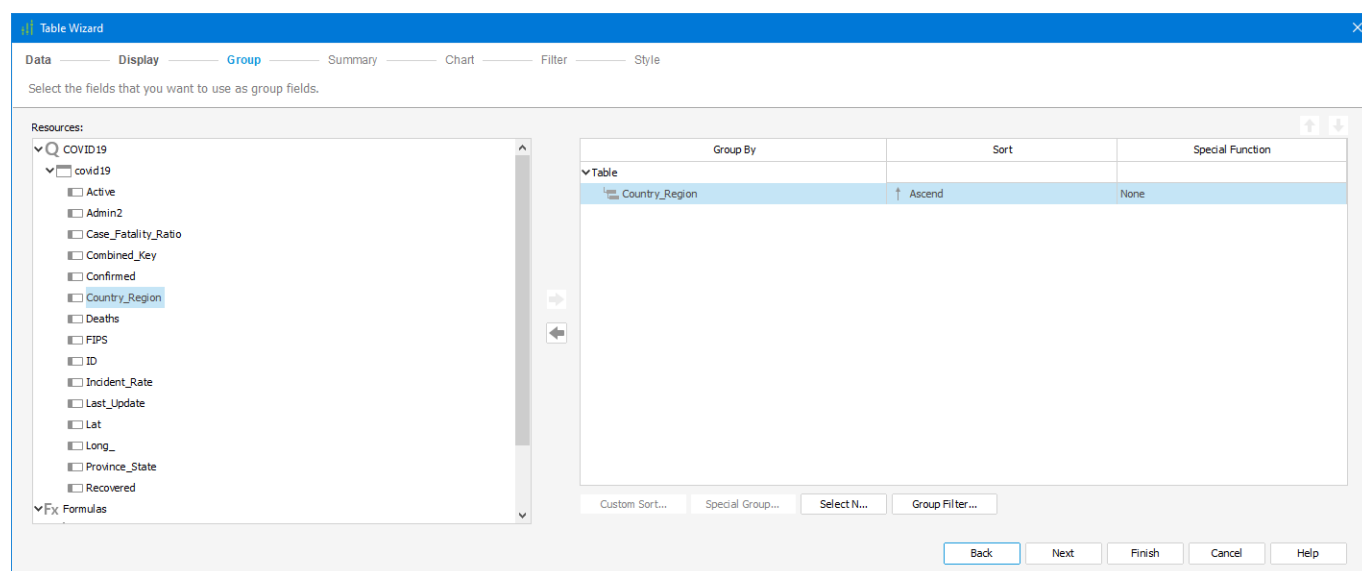
The Table Wizard will guide us by choosing the data source, data display, grouping, summary, chart, filters, and style.



I'm using the covid table that [@Evgeny Shvarov](#) created for the [iris-analytics-template](#) to my data source on this report sample. The chosen fields are Confirmed and Deaths.



The group for this report will be ContryRegion.



The Summary for ContryRegion group will be Confirmed with the Aggregate Function (SUM), the breaking field will be ContryRegion in the Footer position.

The screenshot shows the 'Table Wizard' dialog box in the 'Summary' step. The 'Resources' list on the left includes 'COVID19' and 'Formulas'. Under 'COVID19', fields like 'Active', 'Admin2', 'Case_Fatality_Ratio', 'Combined_Key', 'Confirmed', 'Country_Region', 'Deaths', 'FIPS', 'ID', 'Incident_Rate', 'Last_Update', 'Lat', 'Long_', 'Province_State', and 'Recovered' are listed. The 'Confirmed' field is selected. On the right, a table shows the summarized fields configuration:

Summarized Fields	Aggregate Function	Distinct On	Break Field	Position	Column
Table					
Country_Region					
Confirmed	Sum		Country_Region	Footer	Detail

Navigation buttons at the bottom include 'Back', 'Next', 'Finish', 'Cancel', and 'Help'.

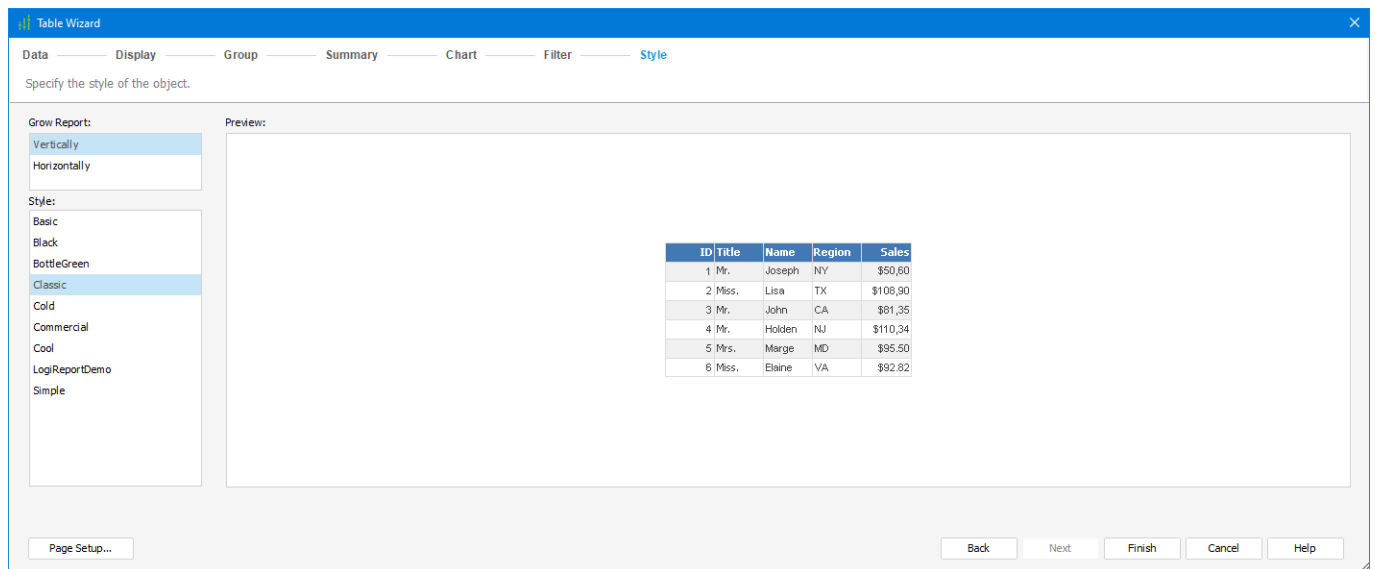
Inside the chart step, I chose the Bar Chart with CountryRegion as my Category and showed values for the Confirmed field.

The screenshot shows the 'Table Wizard' dialog box in the 'Chart' step. The 'What kind of chart would you like to see?' section has 'Bar Chart' selected. The 'Category' dropdown is set to 'Country_Region'. The 'Series' dropdown is empty. The 'Show Values' dropdown is set to 'Sum_Confirmed2'. Navigation buttons at the bottom include 'Back', 'Next', 'Finish', 'Cancel', and 'Help'.

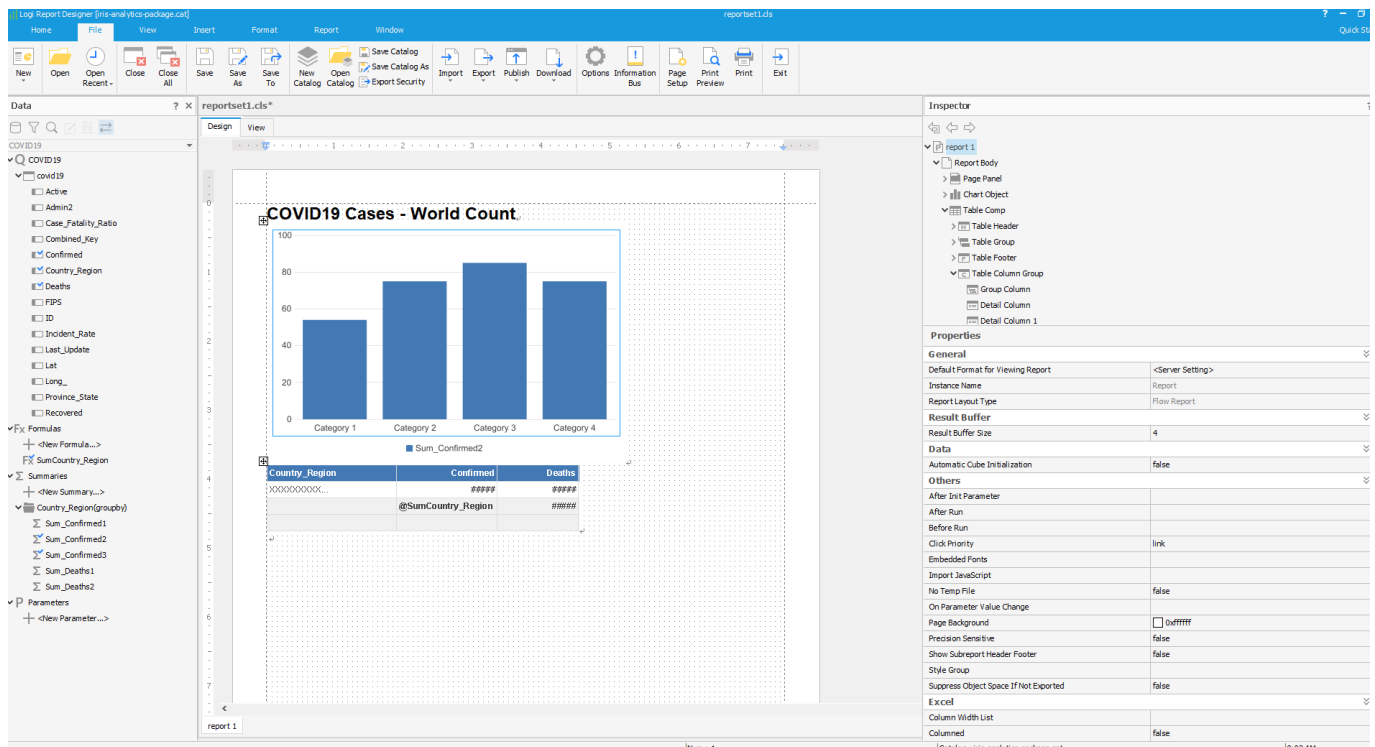
I'm applying one of the pre-existents styles, and the chosen one was "Classic."

How difficult is it to create a report using InterSystems Reports?

Published on InterSystems Developer Community (<https://community.intersystems.com>)



The image below shows how the report shows itself after the wizard finish.



The file [covid19cases-WorldCount-Sample.pdf](#) it's a "print sample" of the report.

If you want another simple sample, my repo has the file [refugeesCitiesImpactedReportSample.pdf](#)

Showing the report for the dataset for the Refugee Admission to the US Ending FY 2018, the dataset is available on [Refugee Admission to the US Ending FY 2018 - dataset by associatedpress | data.world](#)

If you liked the app and think I deserve your vote, please vote for iris-analytics-package!

<https://openexchange.intersystems.com/contest/current>

[#InterSystems IRIS](#) [#InterSystems IRIS for Health](#)
[Check the related application on InterSystems Open Exchange](#)

Source URL: <https://community.intersystems.com/post/how-difficult-it-create-report-using-intersystems-reports>