

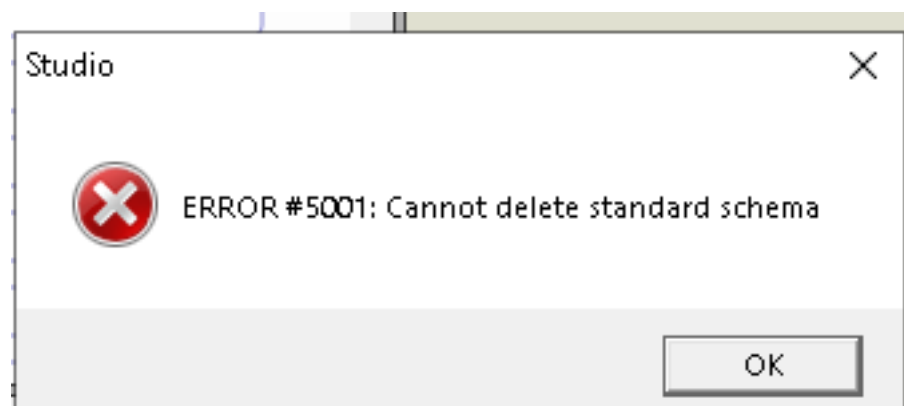
Question

[Graham Hartley](#) · Nov 18, 2020

Delete HL7 Standard Schema

Hi,

I am trying to delete a HL7 standard schema i created by mistake however when i select delete in Studio i get the following:



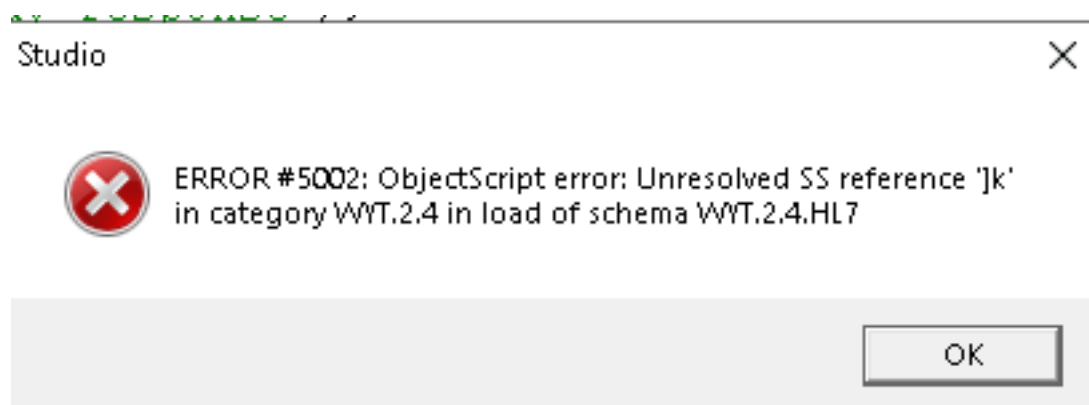
The xml is as below:

```
<?xml version="1.0"?> <Category name="WYT.2.4" std="1">...
```

i then remove the std so it becomes:

```
<?xml version="1.0"?> <Category name="WYT.2.4">...
```

Then i get the error:



I have also tried exporting and importing the schema with the std part removed but still get an error.

We have IRIS 2020.1.

Any ideas?

Thanks,

Delete HL7 Standard Schema

Published on InterSystems Developer Community (<https://community.intersystems.com>)

Graham

[#HL7](#) [#Studio](#) [#InterSystems](#) [IRIS](#)

Source URL: <https://community.intersystems.com/post/delete-hl7-standard-schema>