

Question

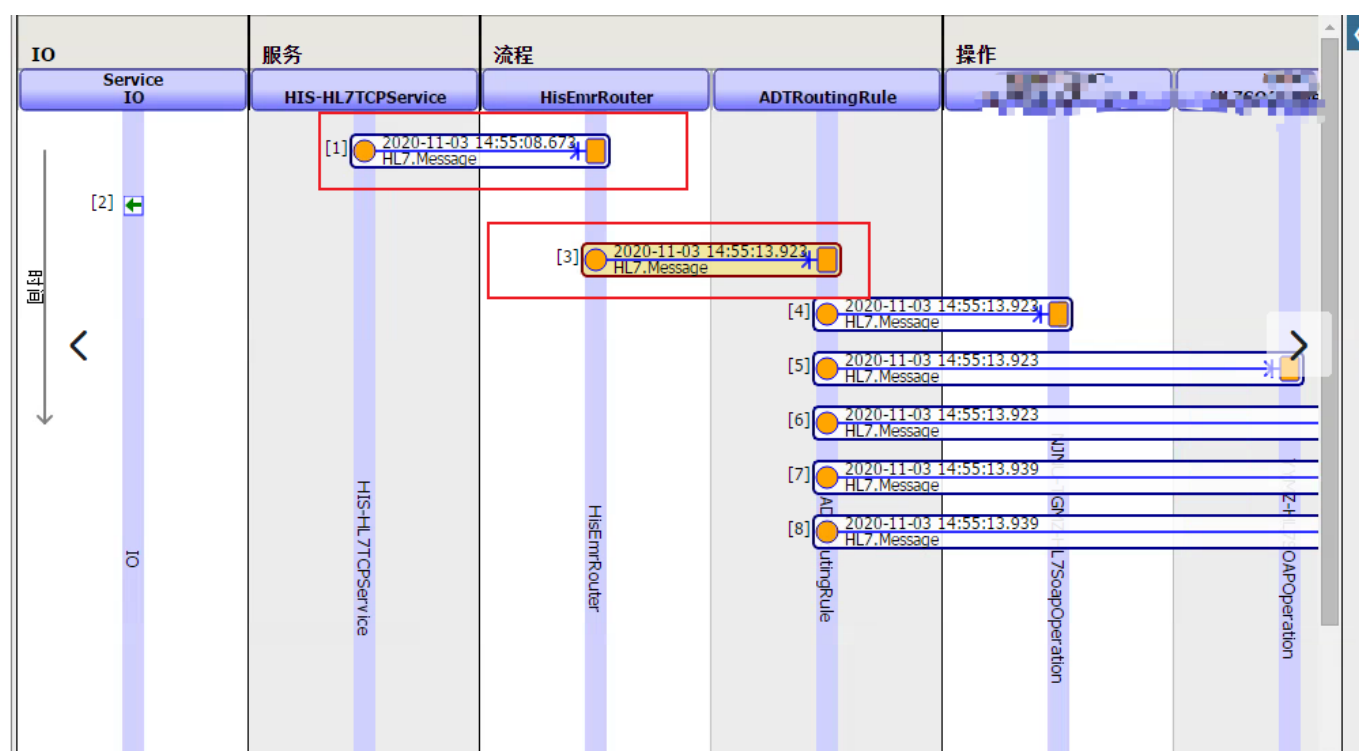
[alex chang](#) · Nov 4, 2020

Why so many seconds from one rule pass to another rule?

Hi

My Ensemble platform worked well before.

Since yesterday , I found out lot of slow request ,I opened trace for one message.



as above shown.

It take about 8s from HisEmrRouter to ADTRoutingRule.

In my opinion, HisEmrRouter And ADTRoutingRule is Simple Rule, should't do IO operation. should be pure compute.

Why does it take so long to process the routing?

What Can I do to avoid it spend too much time to routing?

Tks

[#Business Rules](#) [#Ensemble](#)

Why so many seconds from one rule pass to another rule?

Published on InterSystems Developer Community (<https://community.intersystems.com>)

Source URL: <https://community.intersystems.com/post/why-so-many-seconds-one-rule-pass-another-rule>