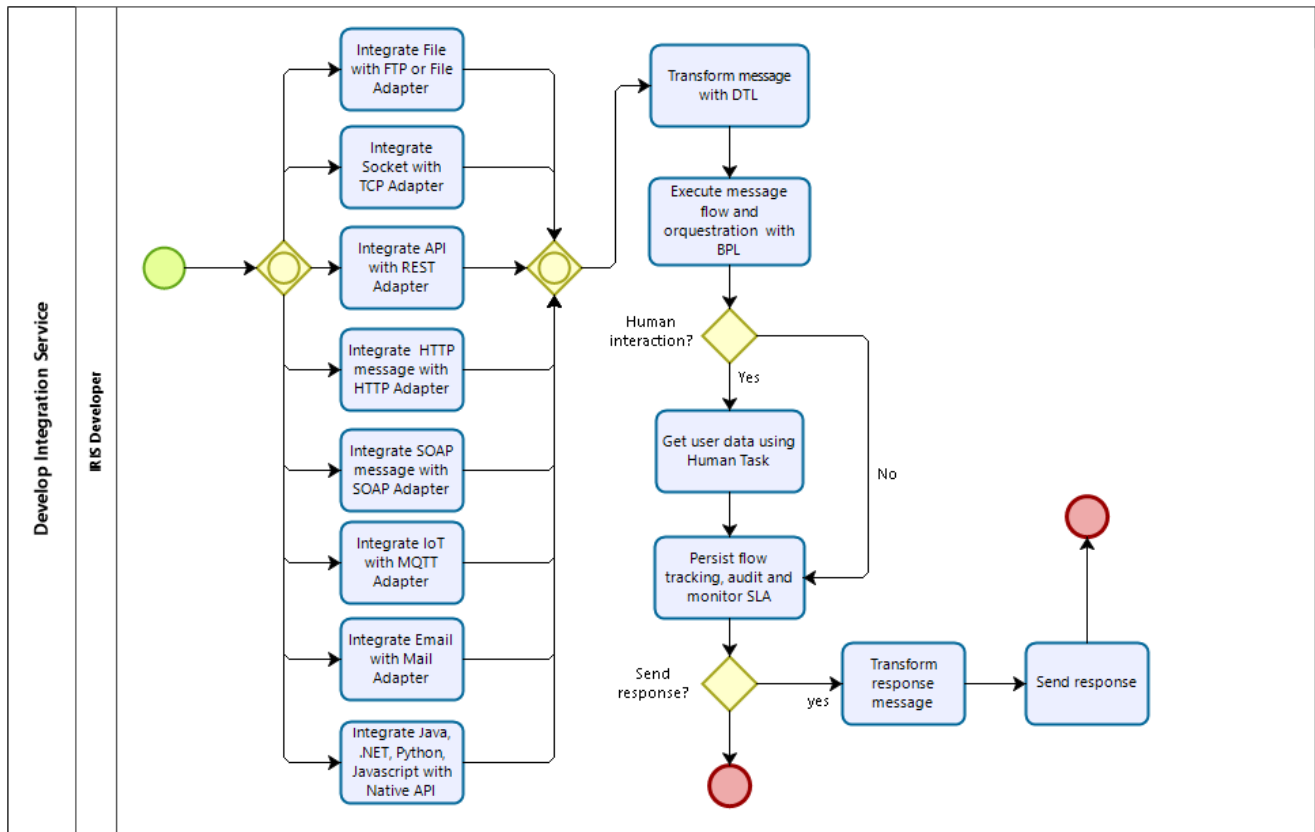


Article

[Yuri Marx](#) · Jul 25, 2020 1m read

## Develop integration service



Powered by  
**bizagi**  
Modeler

The InterSystems IRIS has an integration engine with these core elements:

1. Adapters: are inbound (data/message input/request) and outbound (data/message output/response) integration logic specialized in the type of data or message protocol (file, http, etc.). They are the interface to allows connect with source or target data repositories or systems.
2. DTL: is a component to mapping and transform data between two components in the flow orchestration.
3. BPL: is a component executing BPEL language to execute integration/orchestration flow.
4. Native API: is possible integrate with Java, .NET, Python, Node.js and C++ using PEX (Production EXtension framework), a specialized integration engine to these languages.

So, with IRIS is possible compose components, services, internal and external systems to automate a business scenario without change it, increase reuse, increasing governance and management in this business automation using alerts, KPI, tracking, log and dynamic parameters in the BPL. This is great to SOA projects.

[#Interoperability](#) [#InterSystems Business Solutions and Architectures](#) [#InterSystems IRIS](#)

Source URL: <https://community.intersystems.com/post/develop-integration-service>