

Question

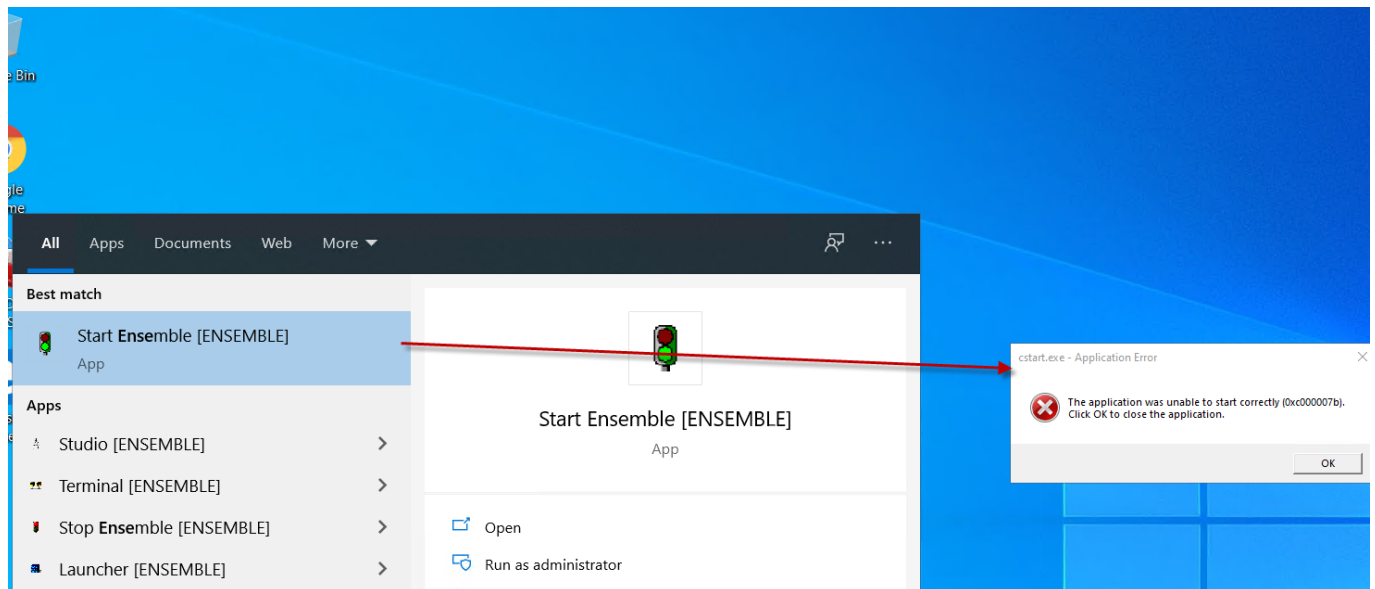
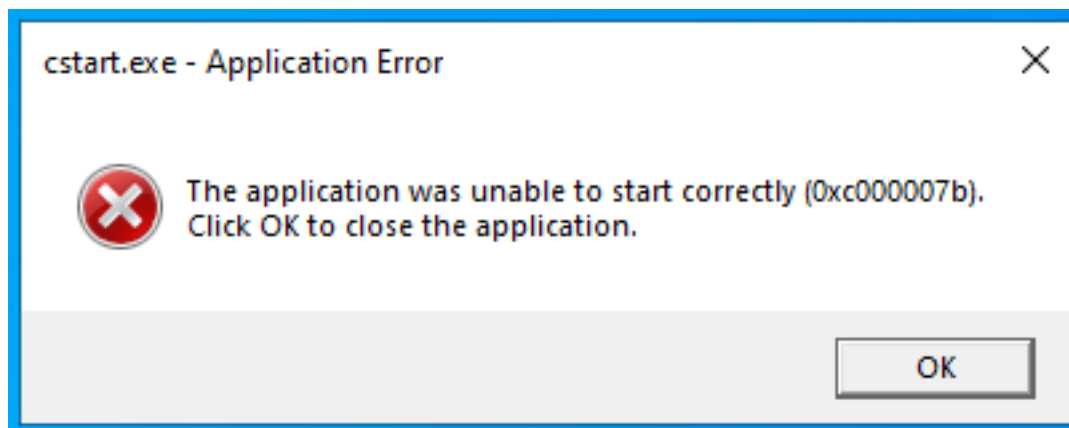
[Vivek Nayak](#) · Jul 6, 2020

Ensemble does not start

Hi Team,

When I tried to open ensemble in my system I got bellow error.

I have done lots of code in my local system but now not able to open the ensemble.



[#Ensemble](#)

Source URL: <https://community.intersystems.com/post/ensemble-does-not-start>