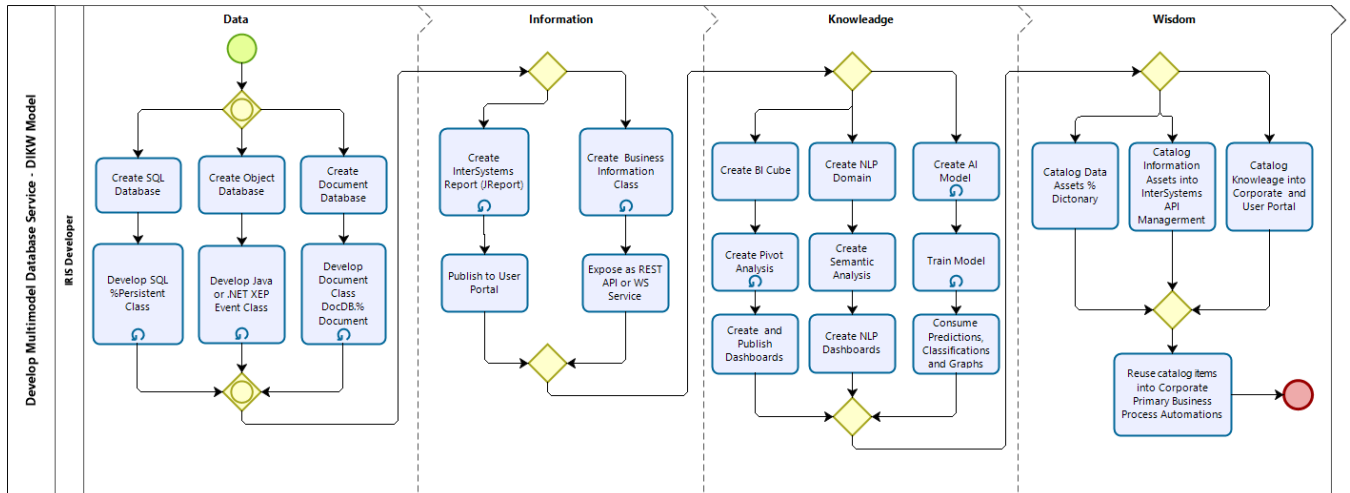


Article

[Yuri Marx](#) · Jul 4, 2020 1m read

Develop multimodel database services using DIKW Model



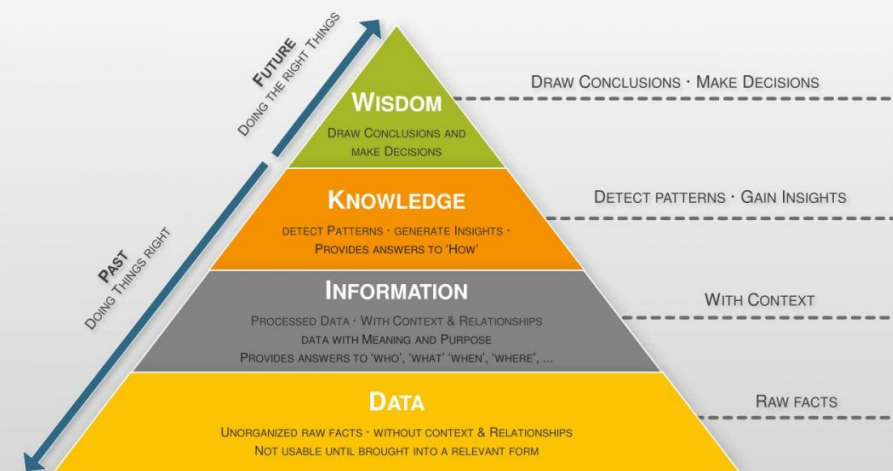
Powered by
bizagi
Modeler

The InterSystems IRIS has functions that allows create DIKW digital services. A few products have the ability to transform data into wisdom, according to the following pyramid.

The DIKW Pyramid

ABSTRACT

Representation of the relationships between data, information, knowledge and wisdom.
The more we enrich data with meaning and context, the more knowledge and insights can be gained.
Finally, the gained insights are used to guide actions.



EXAMPLE

IT Service Outages and corresponding Revenue Loss

WISDOM

IT Service	Down-time (h)	Loss (\$/h)	Σ Loss 2020
Service 1	18	1.500	27.000
Service 2	5	25.000	125.000
Service 3	29	3.000	87.000

"In 2020 Service 2 created the biggest loss through unplanned outages."

"In 2021 we will therefore have to focus on stabilizing Service 2"

KNOWLEDGE

IT Service	Σ Down-time (h)	Loss (\$/h)	Σ Loss 2020
Service 1	18	1.500	27.000
Service 2	5	25.000	125.000
Service 3	29	3.000	87.000

INFORMATION

IT Service	Downtime (h)	Data
Service 1	0.5	2/10/2020
Service 1	1.5	2/18/2020
Service 3	2	2/19/2020
...

DATA

1.5 - 2/10/2020 - 11.5 - Service 1 -
 Service 2 - 5 - 3.6 - 2/19/2020 - 2.4 -
 Service 3 - Service 3 - 22 - 16.1 - 6 -
 3/17/2020 - 2/11/2020 - Service 1 -
 Service 2 - 36.5 - Service 2 - 14.2 - 5

....

File Version 1.0, 4/15/2020 | Terms of Use: [Creative Commons CC BY-ND 4.0](#) | More Info: www.itmtoolkit.com/the-dikw-pyramid

ITMTOOLKIT.com

With IRIS we build data in many formats and purposes (SQL, Document and Object). Using InterSystems IRIS

Reports (JReport) or creating business classes exposed as REST or WS services to deliver to applications and people for consume. So knowledge can be also produced from data and information creating BI and AI projects (with IntegratedML or ML Toolkit). Finally, IRIS allows catalog these digital assets to use into the primary business process automations in Angular, React, Portal, BPMN or other user options.

[#Databases](#) [#Data Model](#) [#InterSystems Business Solutions and Architectures](#) [#InterSystems IRIS](#)

Source URL: <https://community.intersystems.com/post/develop-multimodel-database-services-using-dikw-model>