

## Question

[Tim Miller](#) · Jun 9, 2020

# Determining response from Business Process with Response From set

So we have a custom business service that we use and we are calling `SendRequestSync`.

```
Set tSC=..SendRequestSync(tOneTarget,tTargetStream, .tResponse)
```

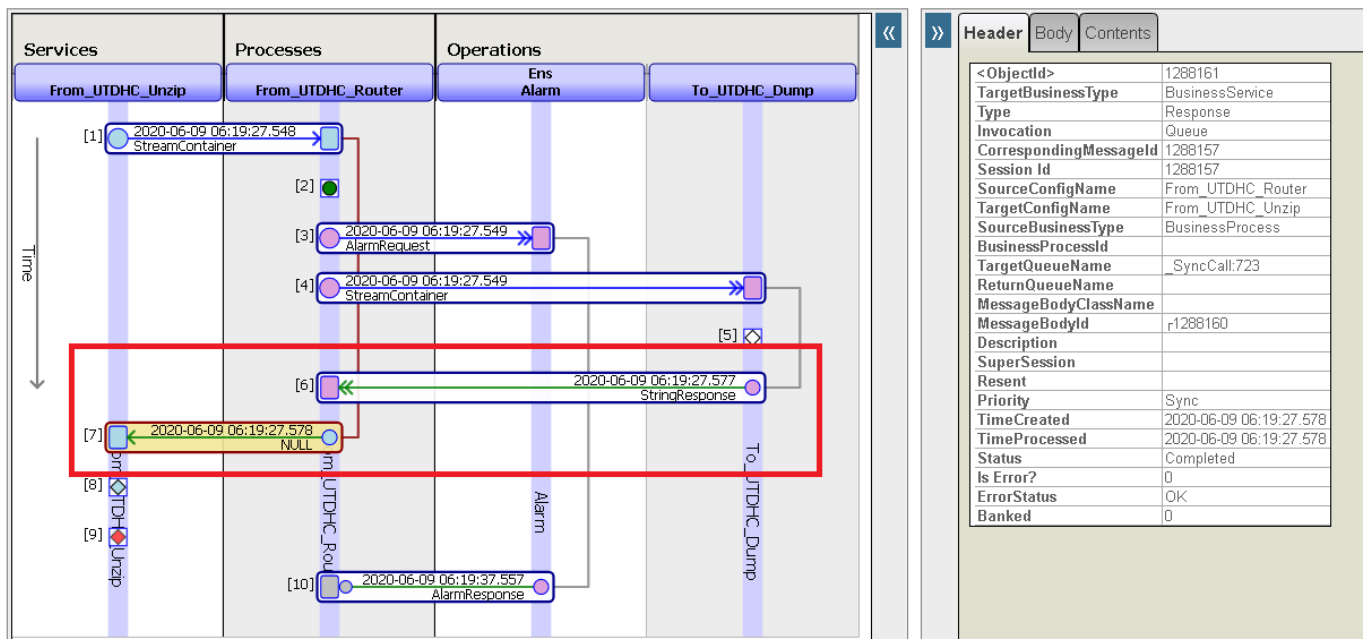
For our response from our custom business operation, we send back an `Ens.StringResponse`.

```
set pResponse = ##class(Ens.StringResponse).%New()  
set pResponse.StringValue = "File Delivery: "_tOutFilename_" of size: "_pRequest.Stream.Size_"  
(modified="_pRequest.Stream.LastModified_" )" Status: "_tSC
```

So now we are trying to use Rules to pass the the messages to certain destinations with a normal business process of `EnsLib.MsgRouter.RoutingEngine` with `Response From set`.

In order to make sure we get multiple responses, we put a + at the front of our `Response From` list.

So now the problem is that I can see our response make it back to the Business Process. However, there is no "response" that comes back from the Business Process to the Business Service (shown below).



I see the reference to our response in `MessageBodyId`.

How do I get that information so I can go back and get my response that was sent into the Business Process?

Thanks,

Tim

[#Business Process \(BPL\)](#) [#ObjectScript](#) [#Ensemble](#)

---

Source URL: <https://community.intersystems.com/post/determining-response-business-process-response-set>