

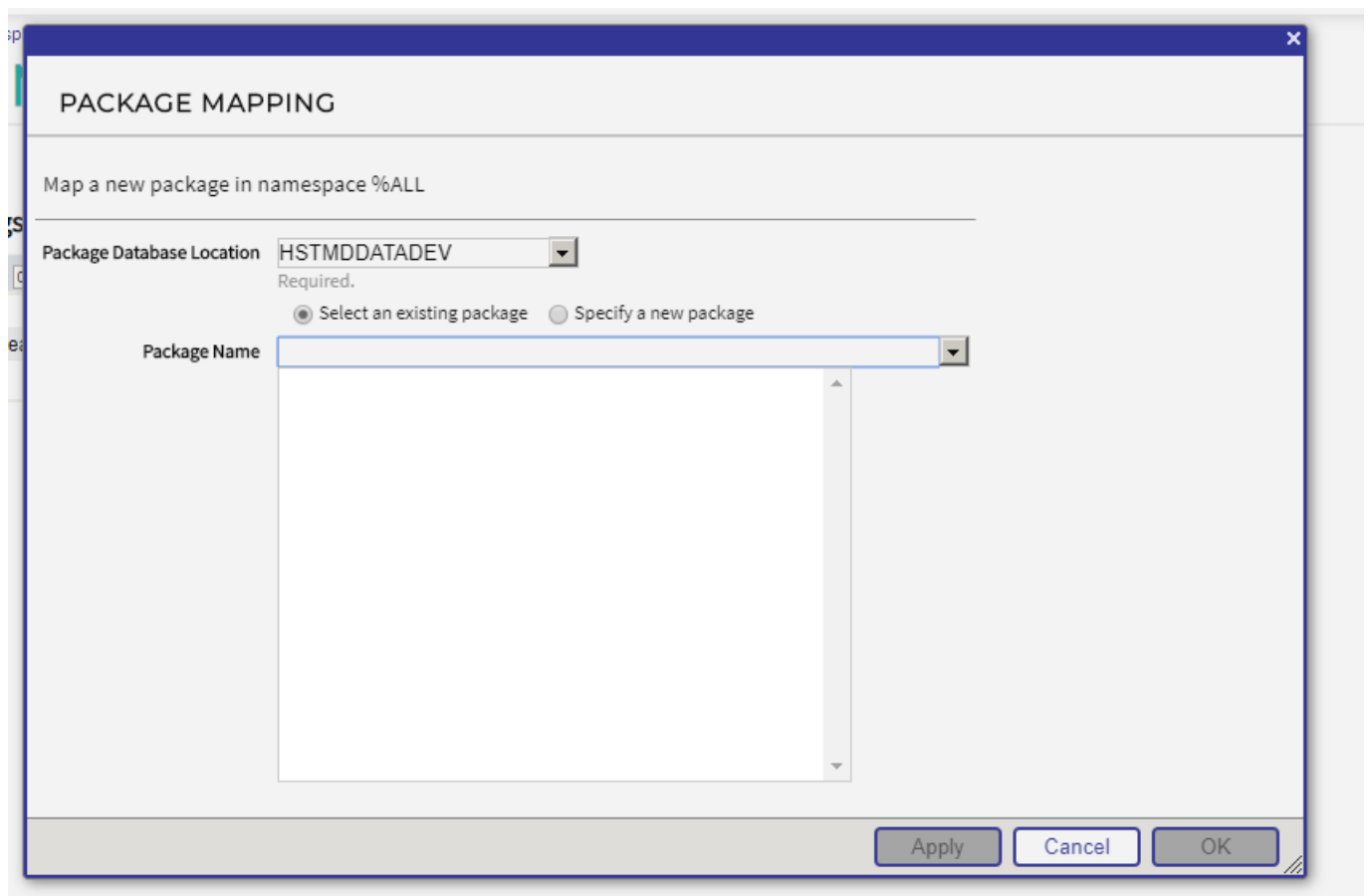
Question

[lkara lkliki](#) · May 26, 2020

Package Mapping why are Package Names for the selected database not populating in the Dropdown box

I am trying to do package mapping in the %ALL NameSpace.

I create a new Package Mapping entry and select my database bu the "Package Name" combo box never populates the packages in this database so I cannot select it, see screenshot below, the "Package Name" list remains empty. There definately are packages in that database. Why is this happening? Did I miss a setting?



[#InterSystems IRIS for Health](#)

Source

URL:<https://community.intersystems.com/post/package-mapping-why-are-package-names-selected-database-not-populating-dropdown-box>