

Question

[James Fitzpatrick](#) · Feb 10, 2020

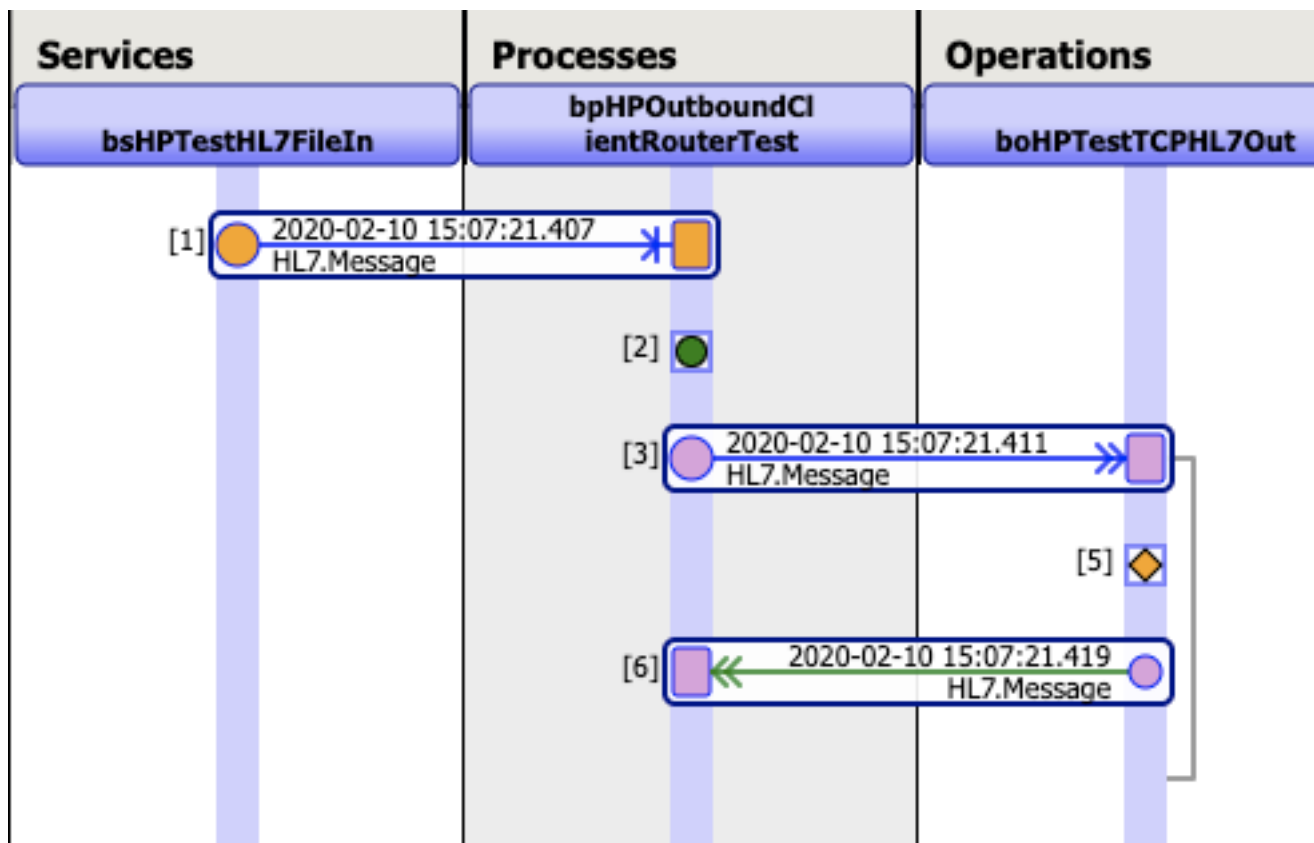
Process Response for HL7 Message Router

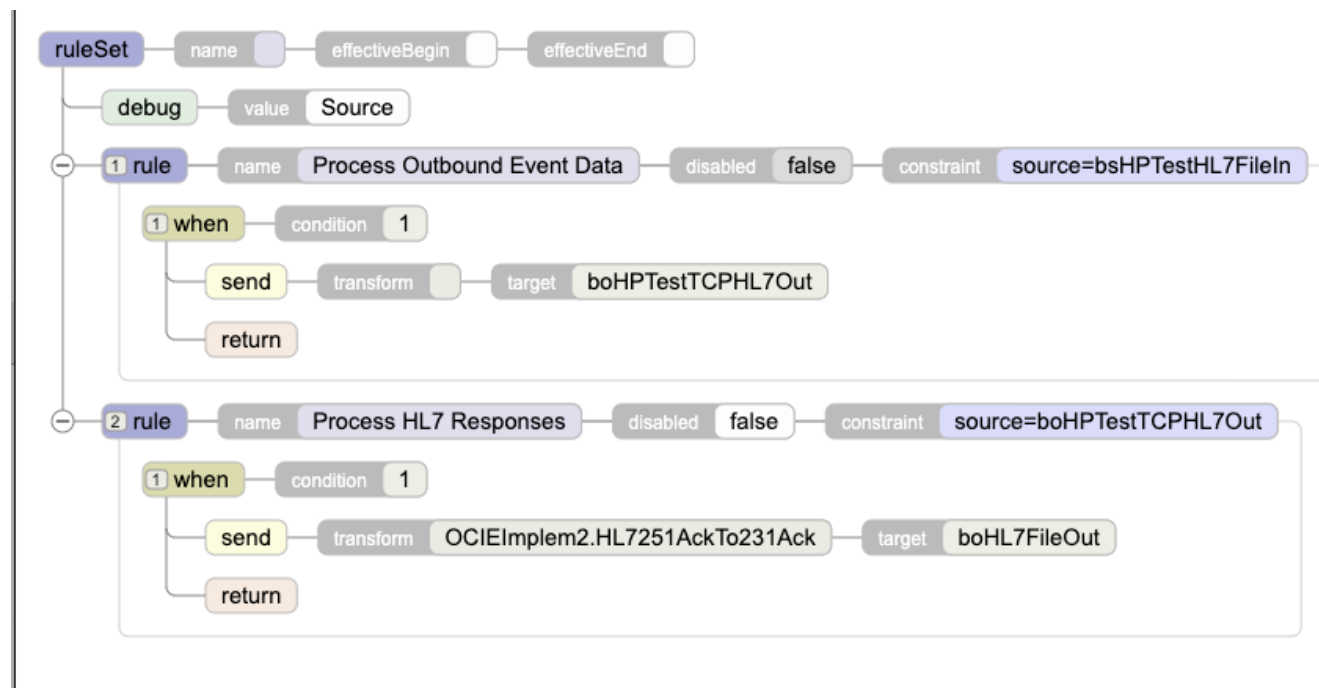
Hello,

I am playing around with an HL7 business rule set and a `EnsLib.HL7.MsgRouter.RoutingEngine` component. I'm wondering how I can get the routing engine to fire a rule when a response is received from a business operation.

I have a simple "debug" statement in my rule to log the "Source" value when a message is received. This debug statement only seems to fire when the message comes as a request from the business service (trace item #1 below). However, I want to fire a rule when a response is received from a specific business operation (item #6 below) - specifically, I want to execute a DTL just on that response data. Is there a way to do this within the same routing engine?

One workaround I see with this is to add a new target to the "Response Target Config Names", but trying to avoid using another business process here.





[#Business Rules](#) [#HL7](#) [#Ensemble](#)

Source URL: <https://community.intersystems.com/post/process-response-hl7-message-router>