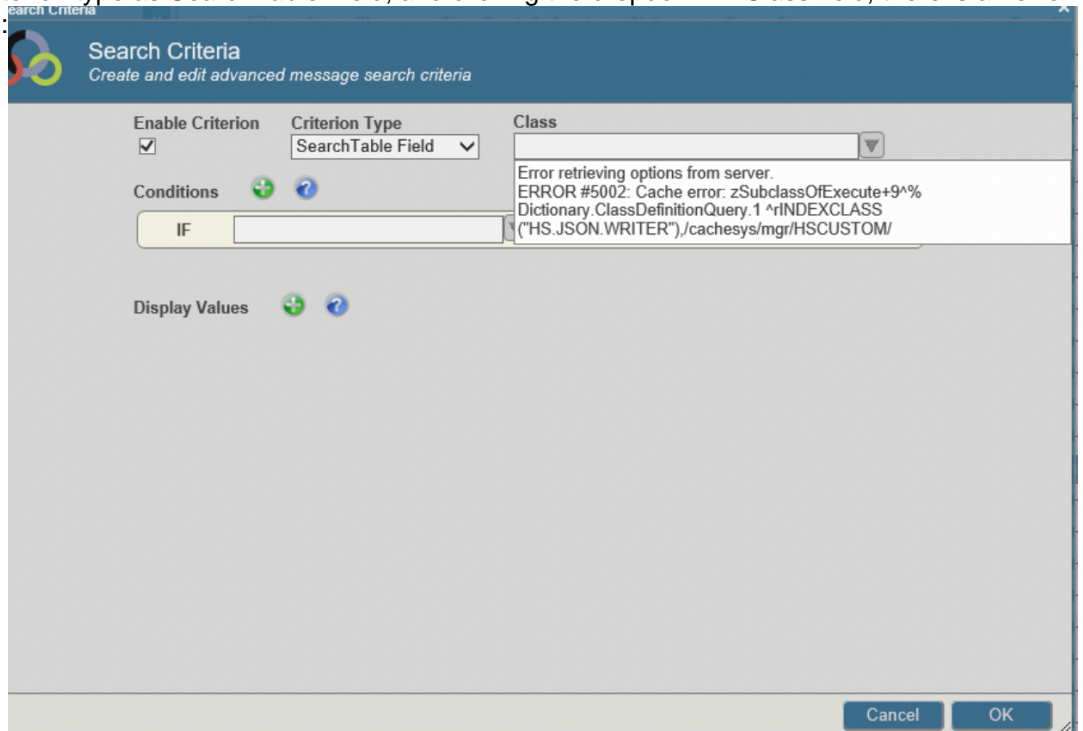


Question

[Ting Wang](#) · May 1, 2019

Search Criteria error

When we go to specific name space to search messages in message viewer, at the moment we are adding the search criteria to add criterion type as SearchTable Field, and clicking the dropdown in Class field, there is an error says below in the image:



Could anyone please let me know what exactly the error is from? Thanks so much.

[#Namespace](#) [#Caché](#) [#Ensemble](#)

Source URL: <https://community.intersystems.com/post/search-criteria-error>