
Article

[Peter Steiwer](#) · Dec 21, 2018 2m read

AnalyzeThis – Quick start into InterSystems BI







AnalyzeThis



Easily transform a CSV file into a personalized preview of DeepSee - InterSystems BI

AnalyzeThis can be found on [InterSystems Open Exchange](#). Use the Download link to navigate to GitHub and begin installing the project. Follow the “ Installation ” section of the GitHub README.

After installation, navigate to the User Portal from the Management Portal:

 Home	Architect
 Analytics	Analyzer
	User Portal
 Interoperability	Text Analytics »
	Tools »
 System Operation	Admin »
 System Explorer	
 System Administration	

Once here, a new Link will have been added, click on the link and then select "New" to begin:



Use “ Browse ” to locate a csv file to import:

Enter the path and name of the import file:

Click on “ Next ” to see a preview of your data and select “ Measure ” or “ Dimension ” :

Import CSV

Please sort each column as Dimension, Date, or Measure.
 A Measure might be something like revenue, or total discharges.
 If it is a measure, please specify if it is a number or currency.
 A Dimension would be things like zip code, state, or measure description

Include? <input checked="" type="checkbox"/>	Include? <input checked="" type="checkbox"/>	Include? <input checked="" type="checkbox"/>	Include? <input checked="" type="checkbox"/>	Include? <input checked="" type="checkbox"/>	Include? <input checked="" type="checkbox"/>
Dimension	Dimension	Dimension	Dimension	Dimension	Dimension
DRGDefinition	ProviderId	ProviderName	ProviderStreetAddress	ProviderCity	ProviderState
EXTRACRANIAL PROCEDURES	10001	SOUTHEAST ALABAMA MEDICAL CENTER	1108 ROSS CLARK CIRCLE	DOTHAN	AL
EXTRACRANIAL PROCEDURES	10005	MARSHALL MEDICAL CENTER SOUTH	2505 U S HIGHWAY 431 NORTH	BOAZ	AL
EXTRACRANIAL PROCEDURES	10006	ELIZA COFFEE MEMORIAL HOSPITAL	205 MARENGO STREET	FLORENCE	AL
EXTRACRANIAL PROCEDURES	10011	ST VINCENT'S EAST	50 MEDICAL PARK EAST DRIVE	BIRMINGHAM	AL
EXTRACRANIAL PROCEDURES	10016	SHELBY BAPTIST MEDICAL CENTER	1000 FIRST STREET NORTH	ALABASTER	AL
EXTRACRANIAL PROCEDURES	10023	BAPTIST MEDICAL CENTER SOUTH	2105 EAST SOUTH BOULEVARD	MONTGOMERY	AL
EXTRACRANIAL PROCEDURES	10029	EAST ALABAMA MEDICAL CENTER	2000 PEPPERELL BOULEVARD	OPELIKA	AL

Import Cancel

As defined, “ Measures ” are the value you would like to aggregate. “ Dimensions ” are the values you would like to aggregate on.

You can also select to hide properties that are not good Dimensions or Measures. For example, “ ProviderId ” is unique, so this will not be a good value to group on. We also do not want any sort of sum or aggregate of this number, so we will not include it here:

Include? ☐

Dimension

ProviderId

10001

10005

10006

10011

10016

10023

10029

All properties default to a Dimension. We will find some properties we want to change to be Measures:

Include? <input checked="" type="checkbox"/> Dimension	Include? <input checked="" type="checkbox"/> Dimension	Include? <input checked="" type="checkbox"/> Dimension	Include? <input checked="" type="checkbox"/> Dimension
TotalDischarges	AverageCoveredCharges	AverageTotalPayments	AverageMedicarePaymer
91	32963.07	5777.24	4763.73
14	15131.85	5787.57	4976.71
24	37560.37	5434.95	4453.79
25	13998.28	5417.56	4129.16
18	31633.27	5658.33	4851.44
67	16920.79	6653.8	5374.14
51	11977.13	5834.74	4761.41

Here we can see that “ TotalDischarges ” , “ AverageCoveredCharges ” , “ AverageTotalPayments ” , and “ AverageMedicarePayments ” would be good values to aggregate. We will make them Measures:

Include? <input checked="" type="checkbox"/> Measure	Include? <input checked="" type="checkbox"/> Measure	Include? <input checked="" type="checkbox"/> Measure	Include? <input checked="" type="checkbox"/> Measure
Integer	Integer	Integer	Integer
TotalDischarges	AverageCoveredCharges	AverageTotalPayments	AverageMedicarePaymer

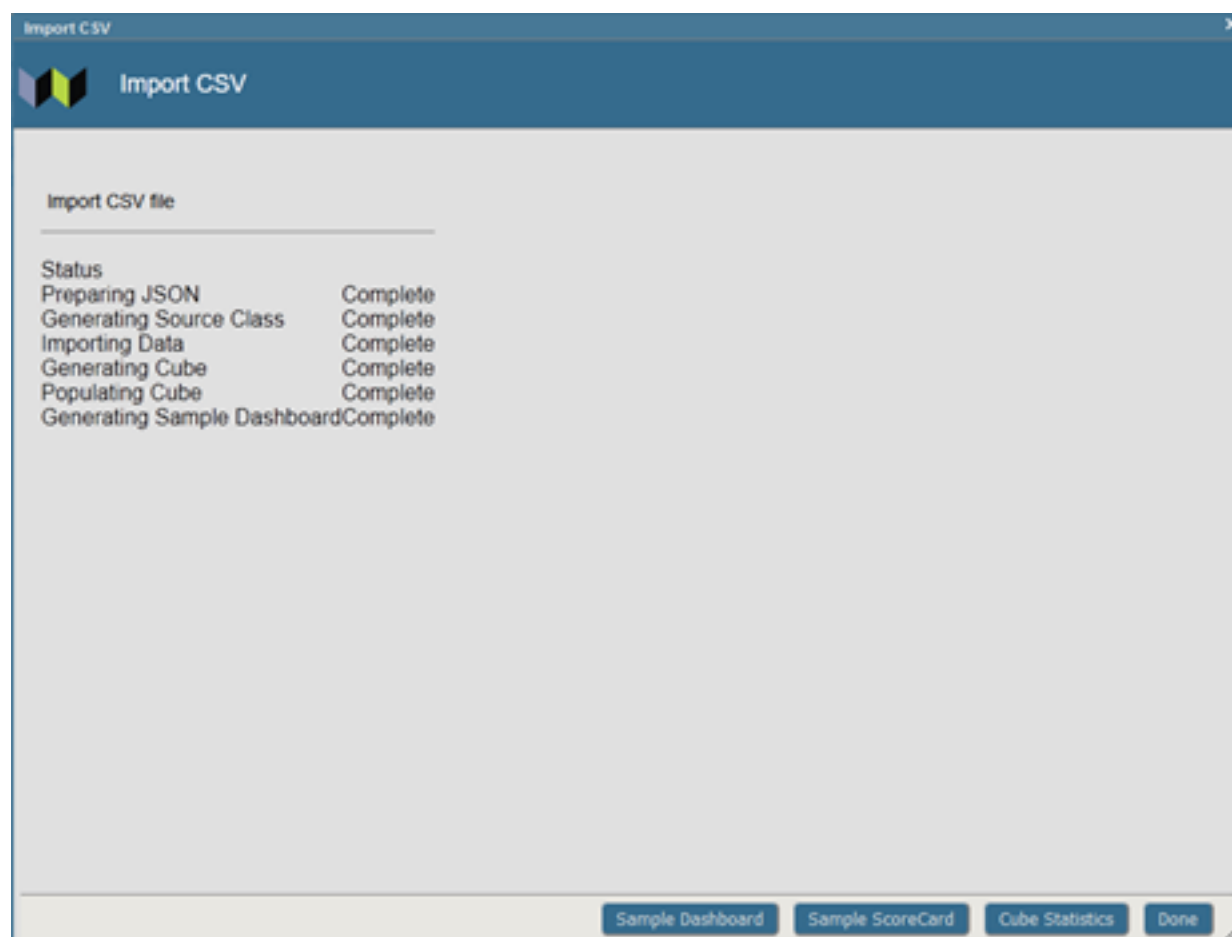
We also know these are dollar amounts, so we will change their type from Integer to Currency:

Include? <input checked="" type="checkbox"/> Measure	Include? <input checked="" type="checkbox"/> Measure	Include? <input checked="" type="checkbox"/> Measure	Include? <input checked="" type="checkbox"/> Measure
Integer	Currency	Currency	Currency
TotalDischarges	AverageCoveredCharges	AverageTotalPayments	AverageMedicarePaymer

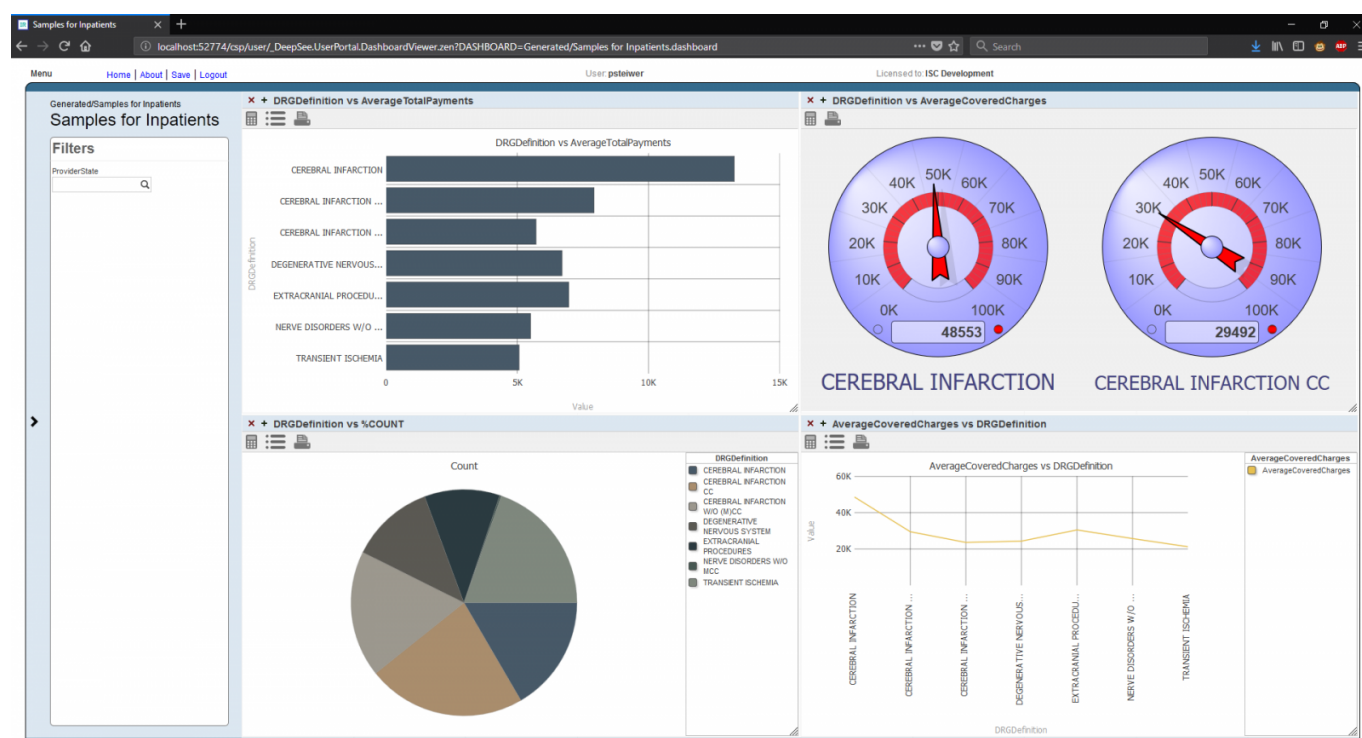
Now that we are happy with our data, we can click “ Import ” . This will start processing the data as seen here:

Status	
Preparing JSON	Complete
Generating Source Class	Working...
Importing Data	Not Yet Started
Generating Cube	Not Yet Started
Populating Cube	Not Yet Started
Generating Sample Dashboard	Not Yet Started

Once this stage is complete (speed depends on the amount of data being processed), we will see some new buttons on the dialog box:



Here we will click on “ Sample Dashboard ” to view the generated sample based on our data:



We can now have our data in a Cube so that we can start exploring the analytics capabilities in just a few minutes.

If any bugs are experienced during this process, please feel free to email me at psteiwer@intersystems.com, or file a [bug report on GitHub](#). For general questions, please comment on this article so others can benefit from the information as well.

Head over to [InterSystems Open Exchange](#) and download AnalyzeThis today!

[#Analytics](#) [#Caché](#) [#InterSystems IRIS](#) [#InterSystems IRIS BI \(DeepSee\)](#) [#Open Exchange](#)

Source URL: <https://community.intersystems.com/post/analyzethis-%E2%80%93-quick-start-intersystems-bi>