

## Question

[John Flippance](#) · Oct 18, 2018

## General BPL Behaviour

Hello All!

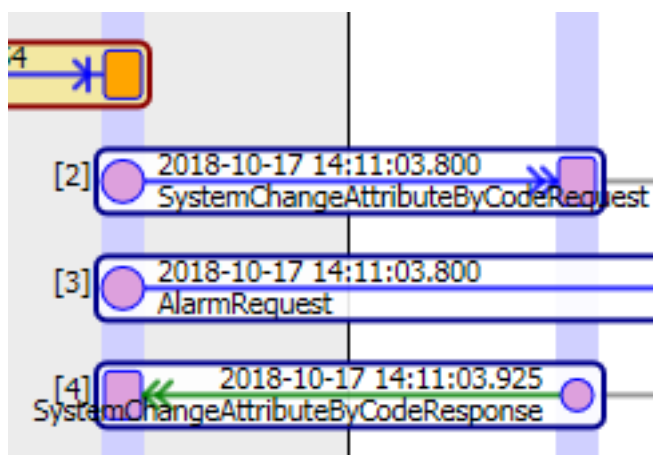
I have a query regarding general behaviour of a business process in Ensemble.

I have a BPL which has a call block out to an operation (Adapter class `EnsLib.SOAP.OutboundAdapter`). The call to this operation is synchronous (i.e. the Asynchronous box is not ticked), with a long time out value. and the pool size of the process is set to 1 in the management portal.

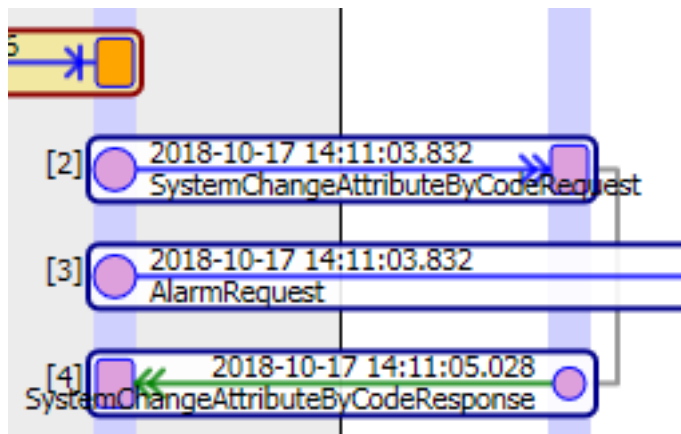
What I am seeing is that when messages are being processed, a second message is being processed by the BPL before the first message that entered the BPL has had a response back from the call to the operation. I was not expecting this behaviour and am wondering how I can ensure that the BPL does not start processing the next message until the first message has received a response back from the call block? (and then processed that response accordingly).

EXAMPLE:

Message 1:



Message 2:



Message 2 is being processed in the BPL and makes a call out [2] before message 1 has been fully processed by the BPL?

[#Business Process \(BPL\)](#) [#Ensemble](#)

---

Source URL: <https://community.intersystems.com/post/general-bpl-behaviour>