

Article

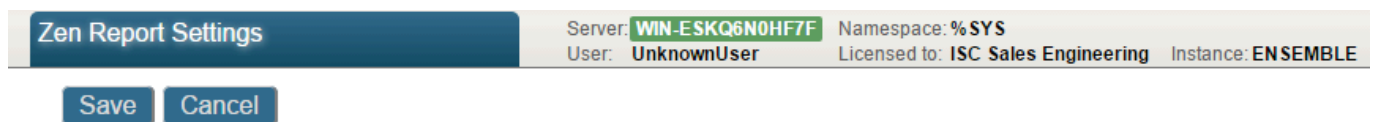
[Tony Beukes](#) · May 6, 2016 2m read

JAVA_HOME path with spaces quoted causes error when outputting a DeepSee pivot or Zen Report as PDF

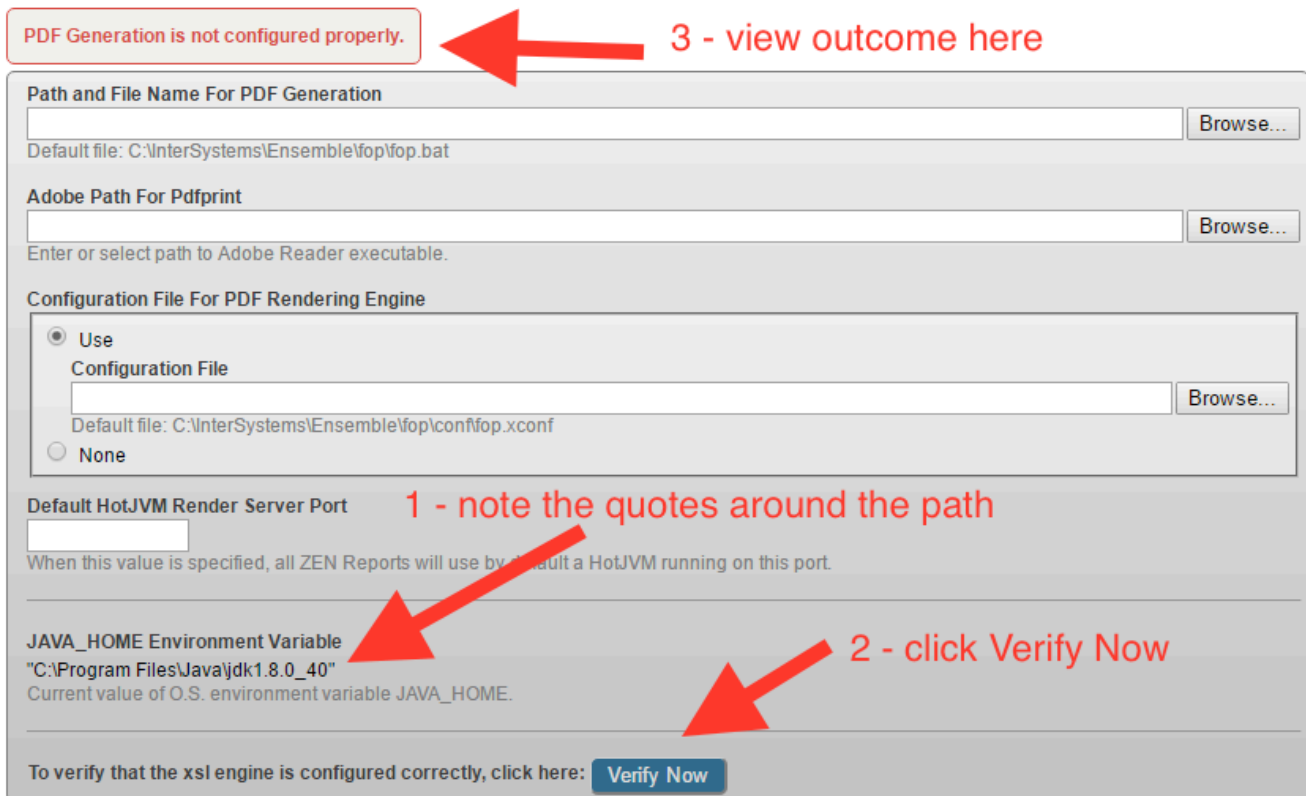
You may experience errors executing Java programs that rely on the JAVA_HOME environment.

For example when Create PDF from this pivot in DeepSee or in this case, outputting a Zen Report as PDF.

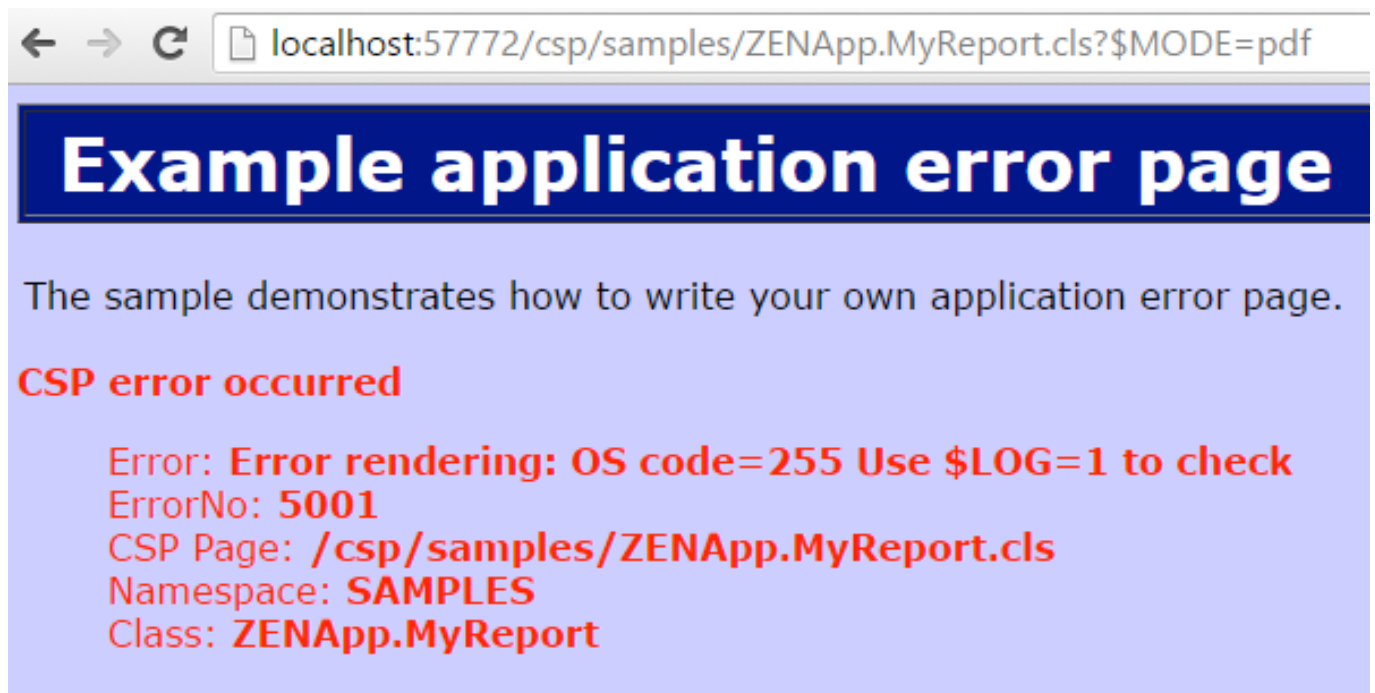
You can verify the PDF generation configuration by clicking on the Verify Now button on the Management Portal System > Configuration > Zen Report Settings page:



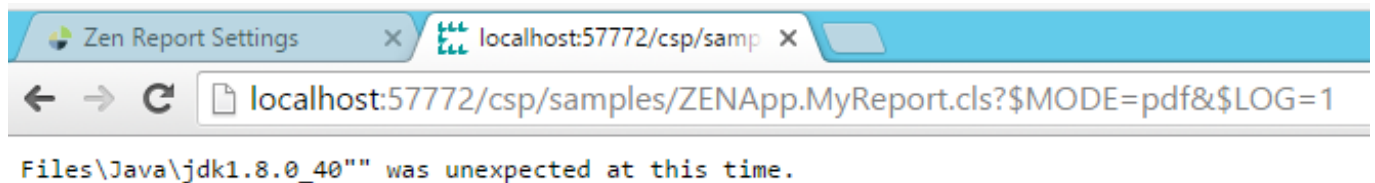
Use the form below to edit Zen report settings for the system:



Outputting a Zen Report as PDF causes an error, for example ZENApp.MyReport.cls in the SAMPLES namespace:



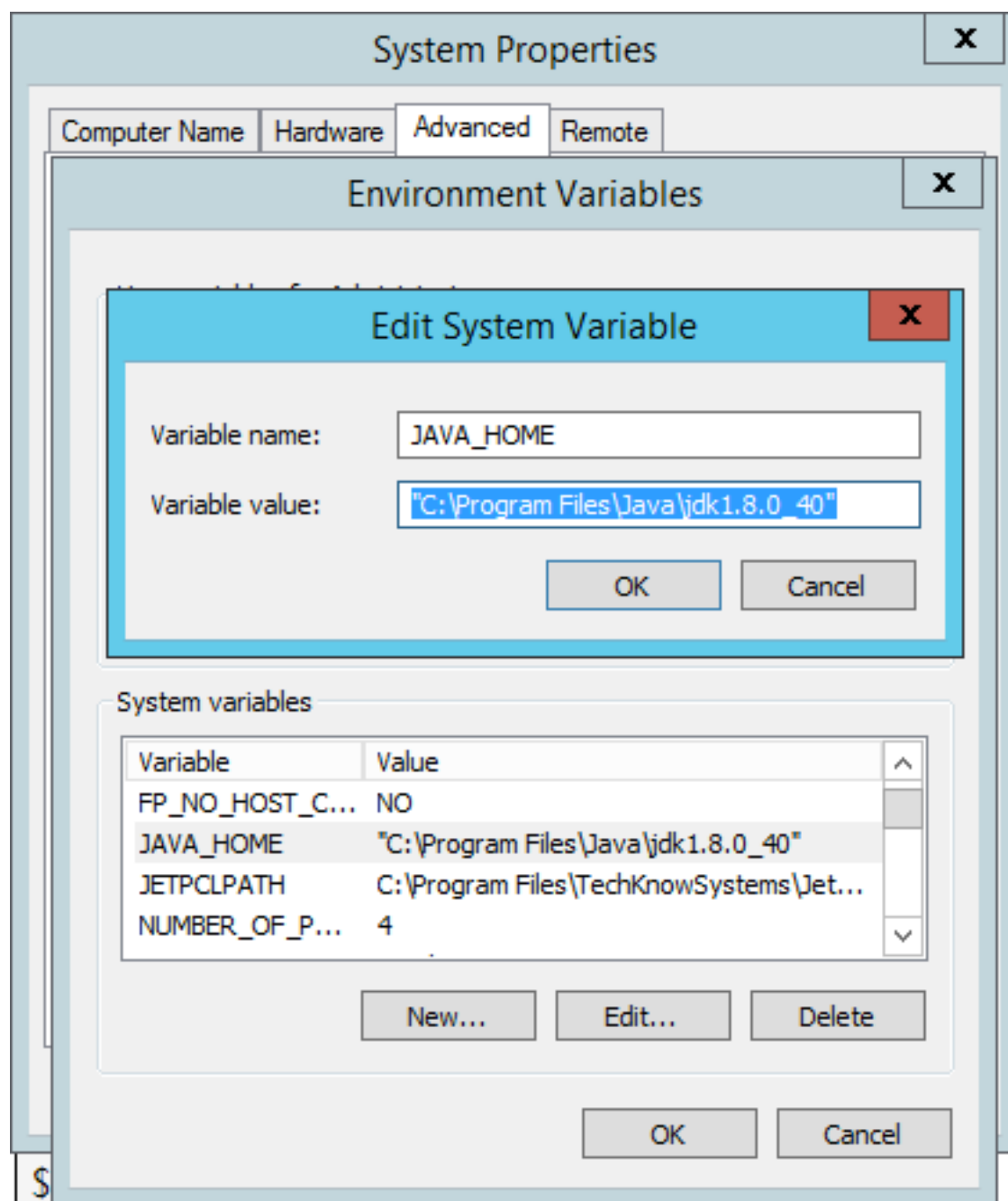
Using the URI Query Parameter \$LOG=1:



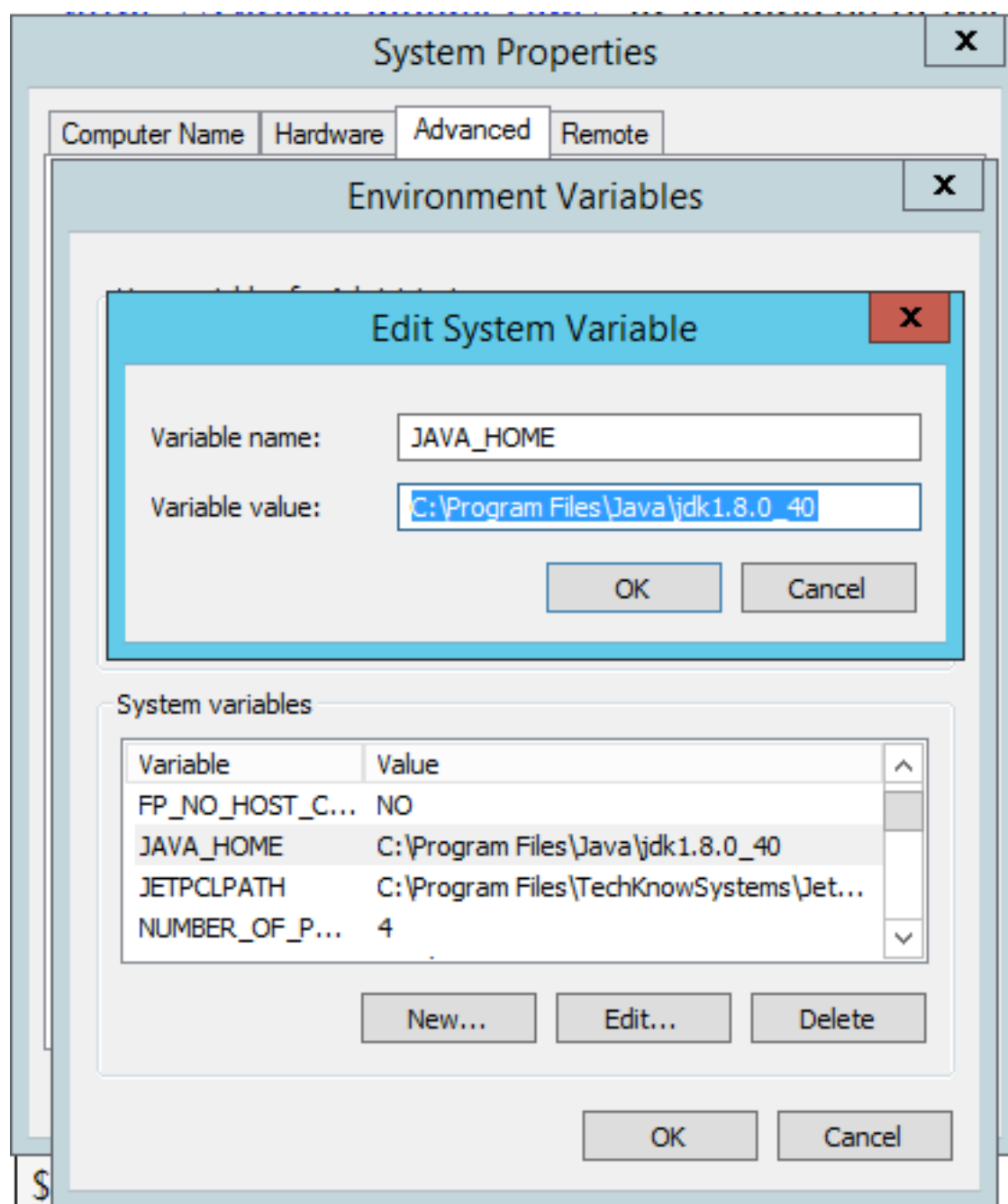
Solution

Remove the quotes around the path defined in the JAVA_HOME environment variable and restart Caché.

1) Change the JAVA_HOME path from:



To:



2) Restart Caché.

3) Verify the PDF generation configuration:

| Zen Report Settings | | Server: WIN-ESKQ6N0HF7F | Namespace: %SYS |
|---------------------|--|-------------------------|-------------------------------------------------------|
| | | User: UnknownUser | Licensed to: ISC Sales Engineering Instance: ENSEMBLE |

Save

Cancel

Use the form below to edit Zen report settings for the system:

PDF Generation is configured properly.

Path and File Name For PDF Generation

Browse...

Default file: C:\InterSystems\Ensemble\fp\fp.bat

Adobe Path For Pdfprint

Browse...

Enter or select path to Adobe Reader executable.

Configuration File For PDF Rendering Engine

☒ Use Configuration File

Browse...

Default file: C:\InterSystems\Ensemble\fp\conf\fp.xconf

☐ None

Default HotJVM Render Server Port

When this value is specified, all ZEN Reports will use by default a HotJVM running on this port.

JAVA_HOME Environment Variable

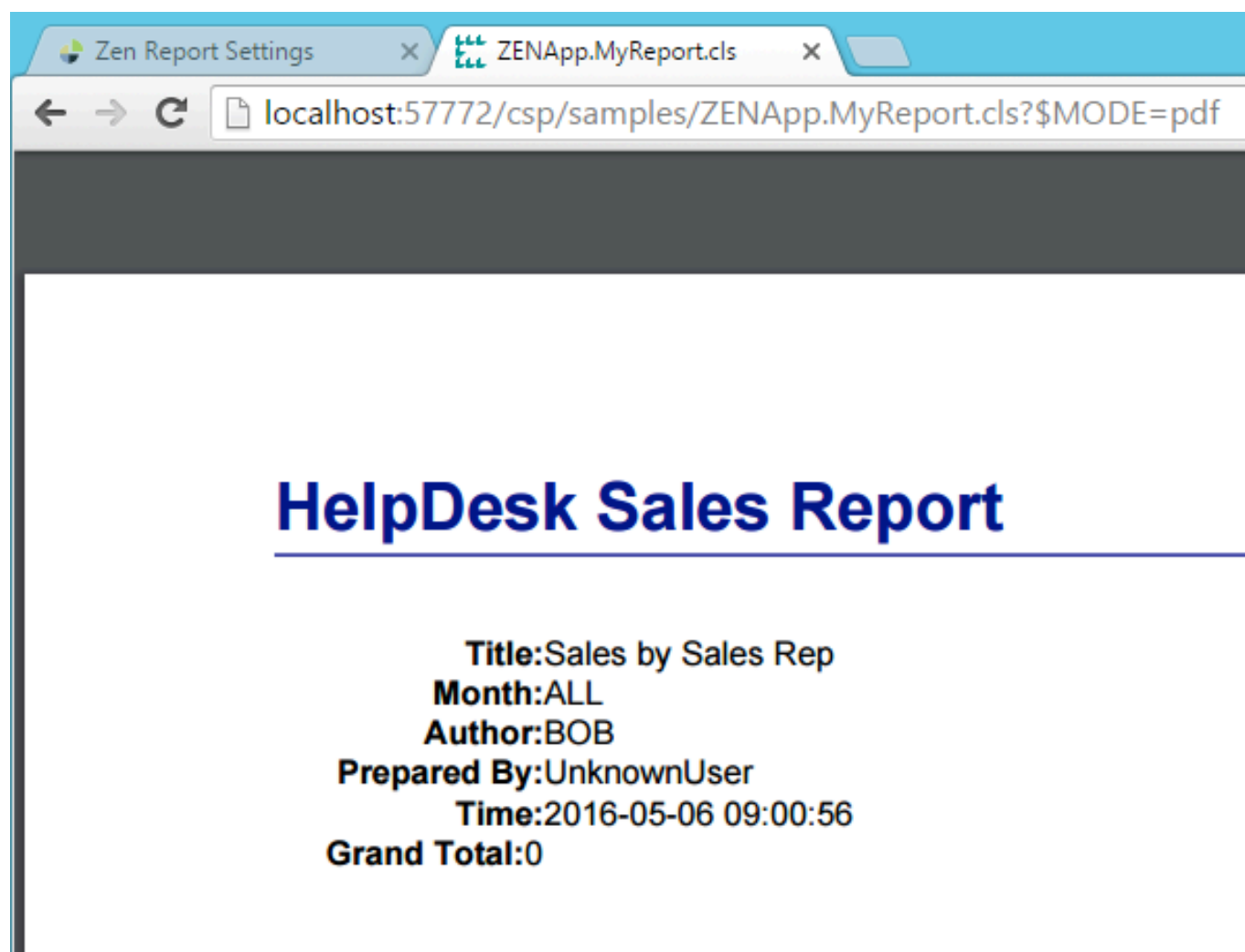
C:\Program Files\Java\jdk1.8.0_40

Current value of O.S. environment variable JAVA_HOME.

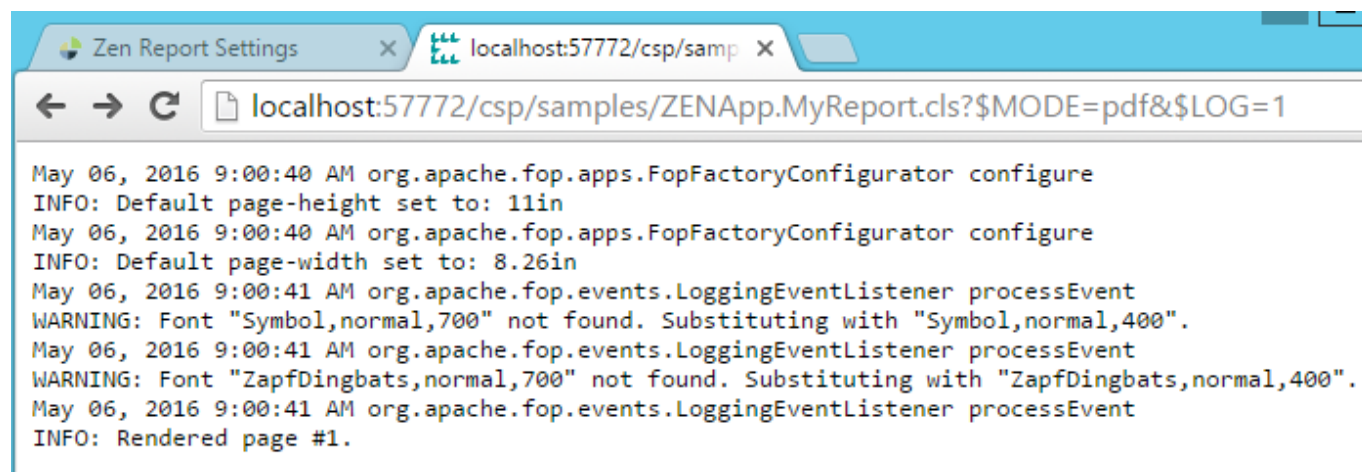
To verify that the xsl engine is configured correctly, click here:

Verify Now

4) View the report as PDF:



5) For reference view the log again:



References:

C:\>systeminfo | findstr /B /C:"OS Name" /C:"OS Version"
OS Name: Microsoft Windows Server 2012 R2 Standard
OS Version: 6.3.9600 N/A Build 9600JDK:

```
C:\>java -version
java version "1.8.0_91"
Java(TM) SE Runtime Environment (build 1.8.0_91-b14)
Java HotSpot(TM) 64-Bit Server VM (build 25.91-b14, mixed mode)
```

Node: WIN-ESKQ6N0HF7F, Instance: ENSEMBLE

```
USER>w $zv
Cache for Windows (x86-64) 2016.1 (Build 656U) Fri Mar 11 2016 17:42:42 EST
USER>
```

[Using Zen Reports](#)

[Configuring Zen Reports for PDF Output](#)

[DeepSee Dashboards Printing Data](#)

[Configuring Maven for Windows 7. Files\Java\jdk1.6.023 " " was unexpected at this time error](#)

[#InterSystems IRIS BI \(DeepSee\) #ZEN #Caché](#)

Source

URL:<https://community.intersystems.com/post/javahome-path-spaces-quoted-causes-error-when-outputting-deepsee-pivot-or-zen-report-pdf>